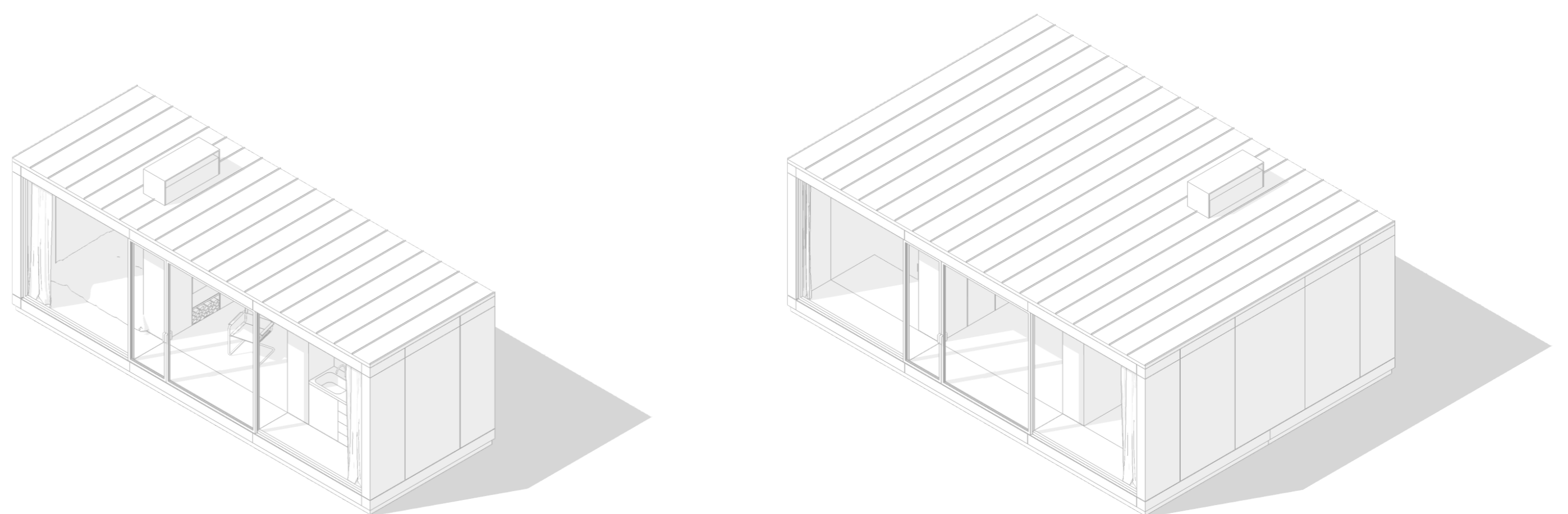




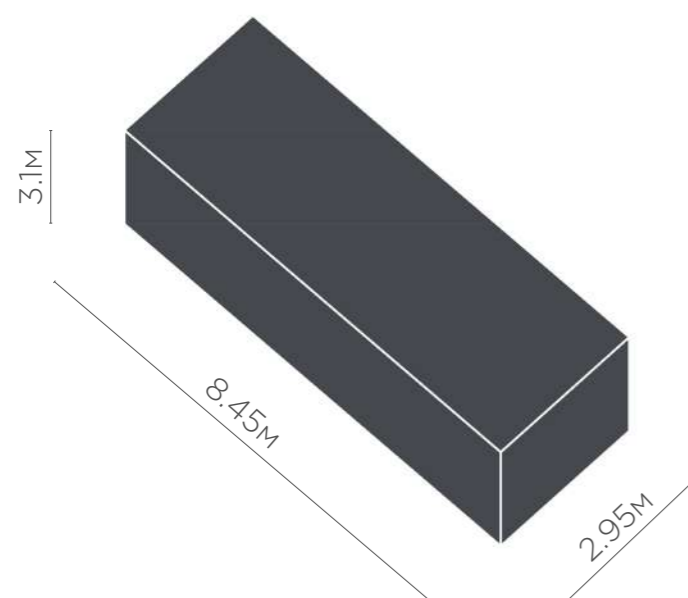
House on river

**Torii House**  
Create your own home

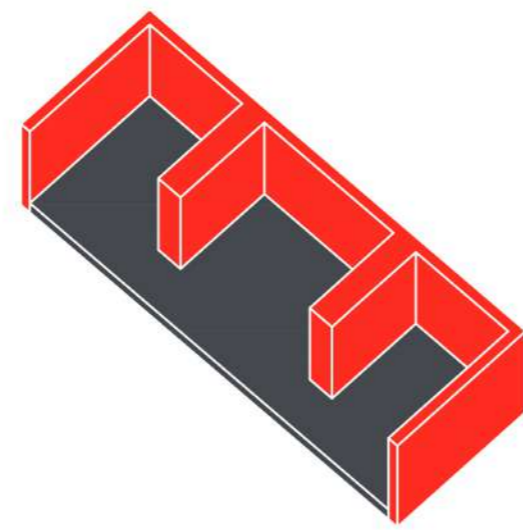


# Concept scheme

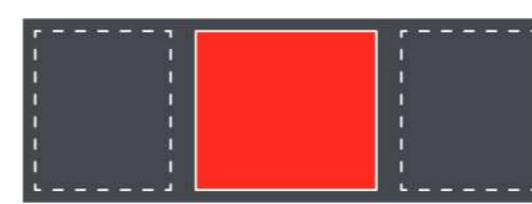
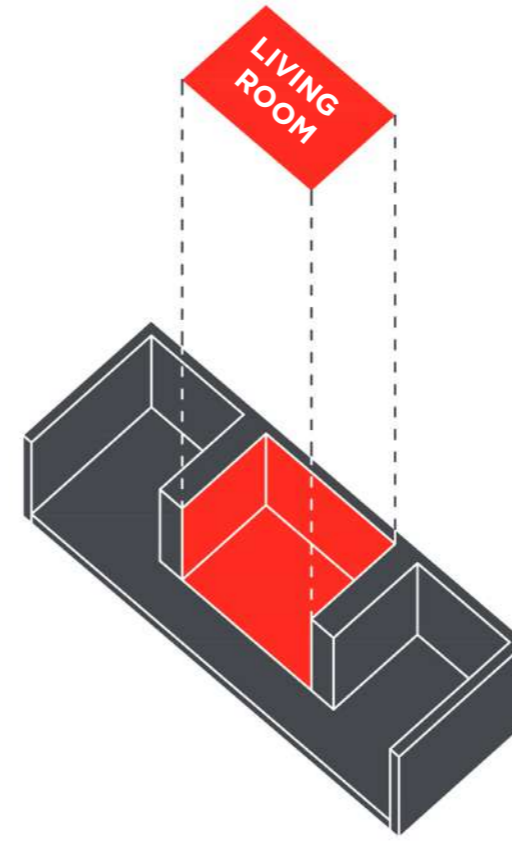
## Core module



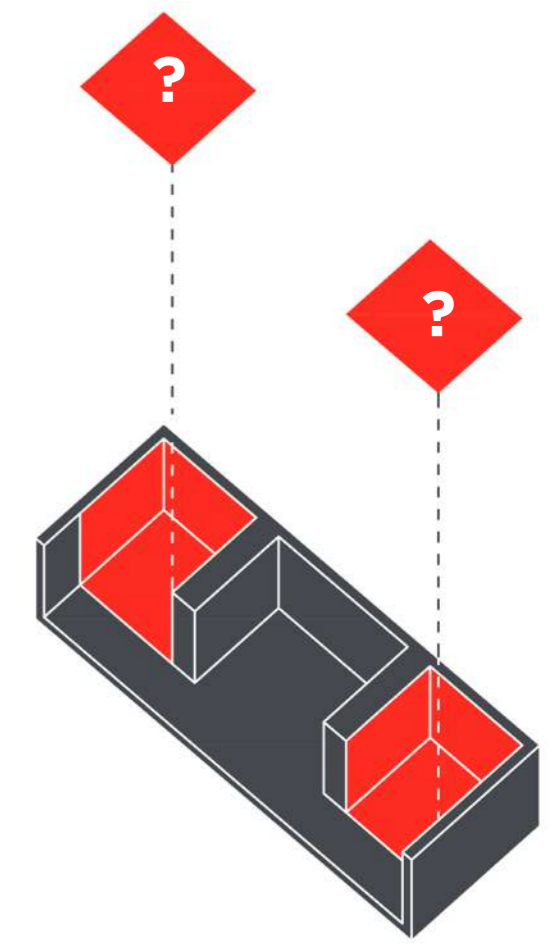
1. Base volume



2. Separate

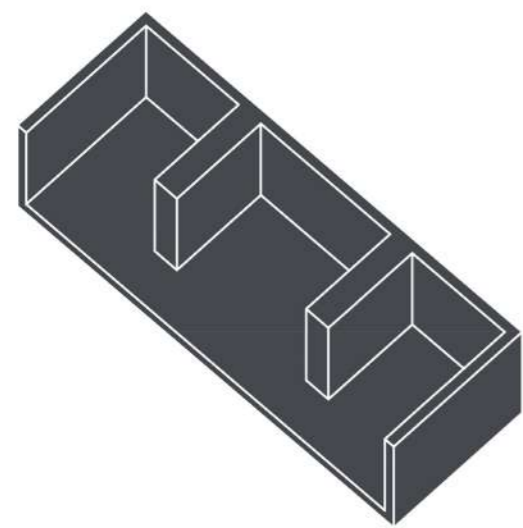


3. Living room

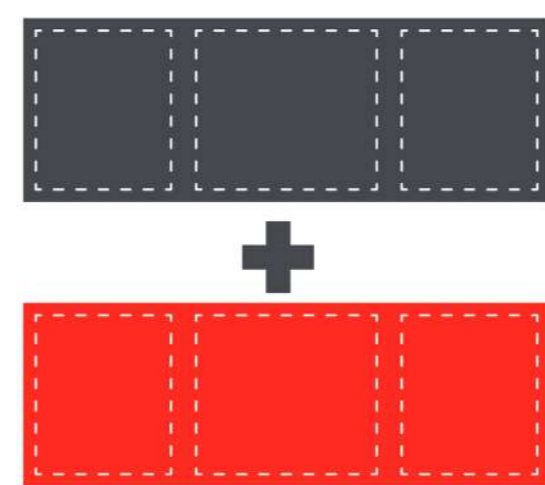
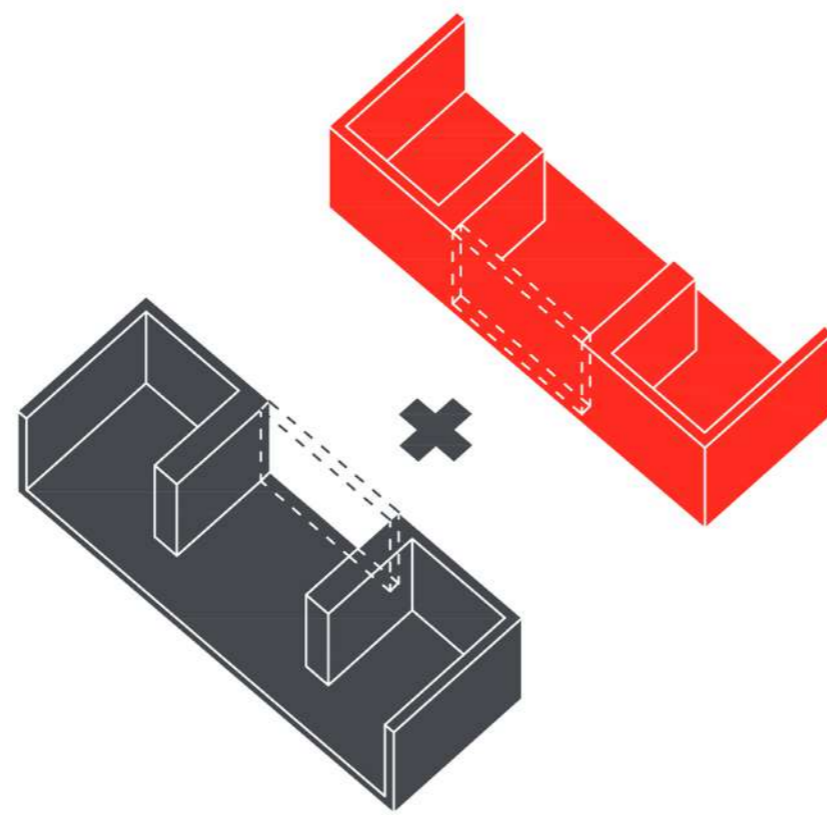


4. Living room and two additional spaces on sides

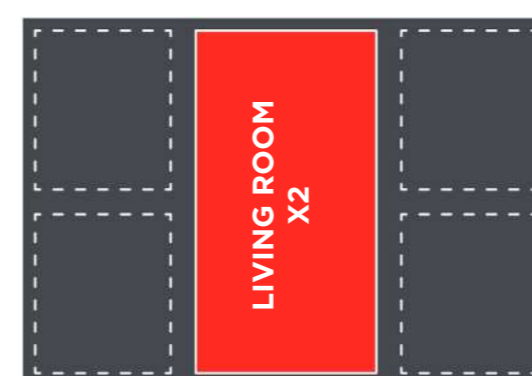
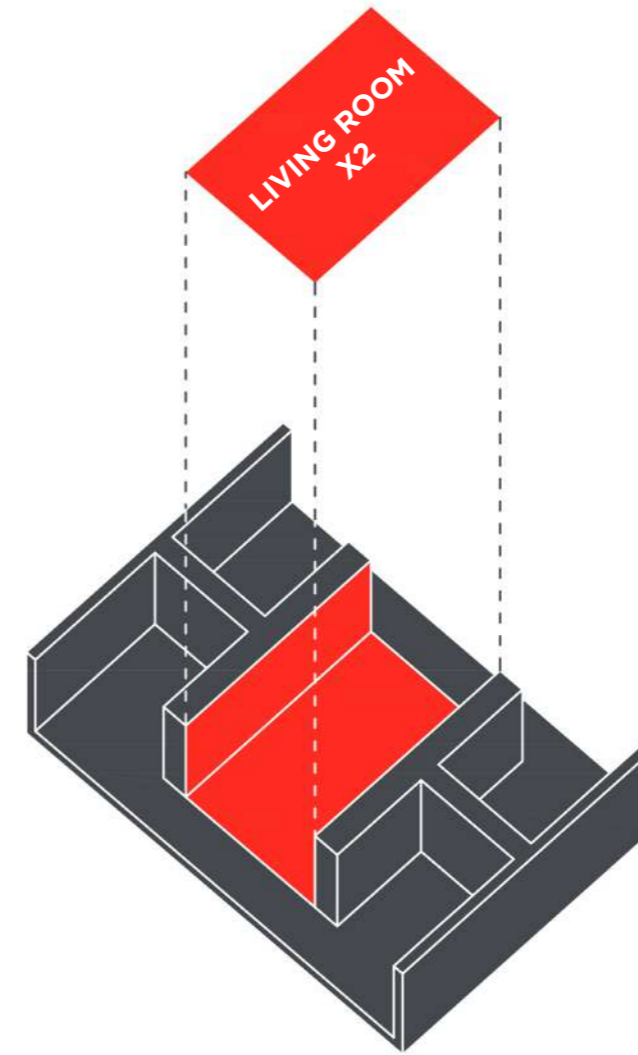
## Enlarged house



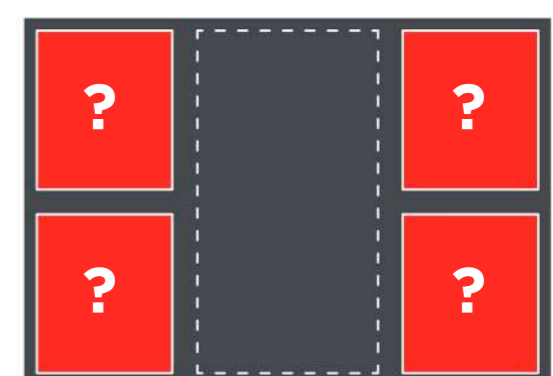
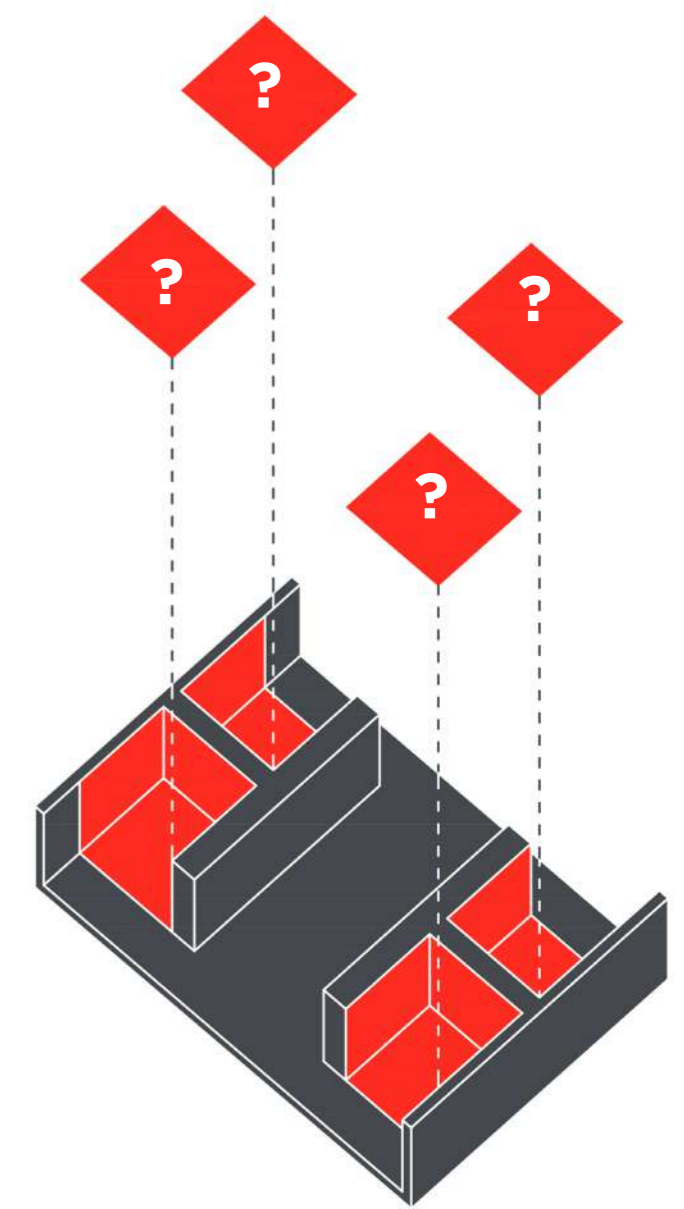
5. Core module



6. Addition new module

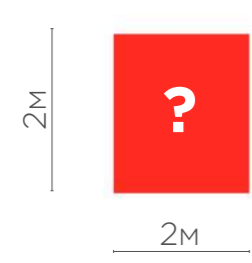


7. Living room x2



8. Big living room and additional spaces on sides

## Additional spaces



2M



Bedroom



Kitchen\Bath-room



Working



Children



Open terrace



Reading room



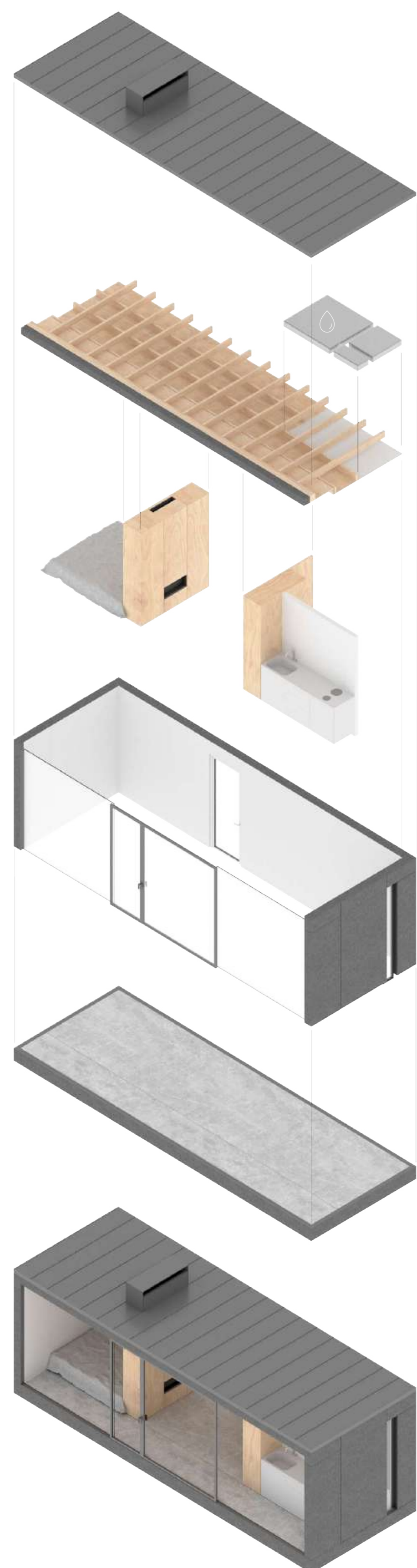
Technical



Storage



Etc.



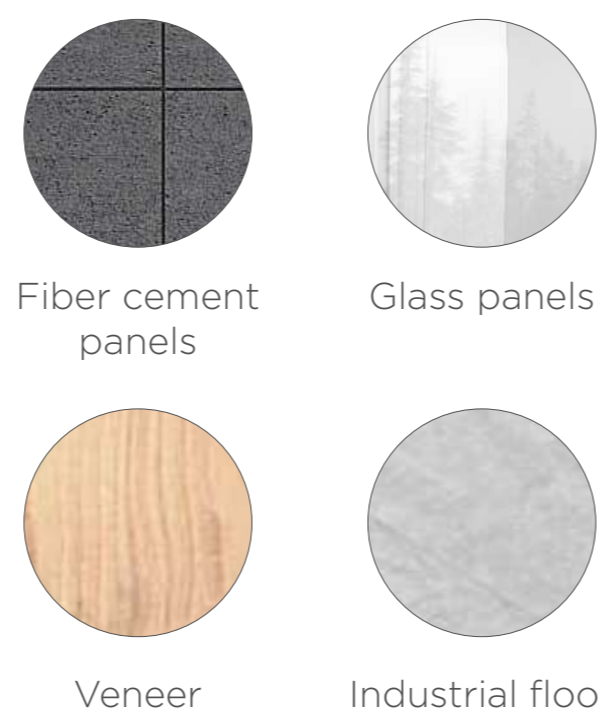
A tiny house is a modular structure, thanks to which it is possible to assemble your individual house during the construction phase, or enlarge existing one. The house is of two types - standard and enlarged. All houses have in the living room in the center and the same rooms on the sides. These rooms can be of any functionality (bedroom, kitchen, bathroom, work area, outdoor terrace, etc.), so that each built house will be unique. The standard house consists of a living room and two rooms on the sides - a bedroom and a kitchen with a bathroom. The bedroom has a bed 2x2 meters, so you can take any position on it, and the fireplace attached to it will add heat in winter. The kitchen is two meters long and contains all the minimum necessary for a comfortable cooking. The raised house is made up of two standard ones, and for their connection it is required to remove a small part of the wall. In the enlarged house there is one central large living room and four identical rooms on each side. The side rooms are dressed from the living room by partitions - cabinets, a fireplace, a rack, etc. Partitions have a width of 400 mm. In the houses there are transparent external walls, which allows you to enjoy nature from any room. In the transparent wall there are sliding doors, so you can transform the living room into a summer terrace.

Technical space for water tank, filters, pump e.t.c.

Kitchen with bathroom

Transparent external walls, which allows you to enjoy nature from any room. In the transparent wall there are sliding doors, so you can transform the living room into a summer terrace.

The kitchen is two meters long and contains all the minimum necessary for a comfortable cooking.

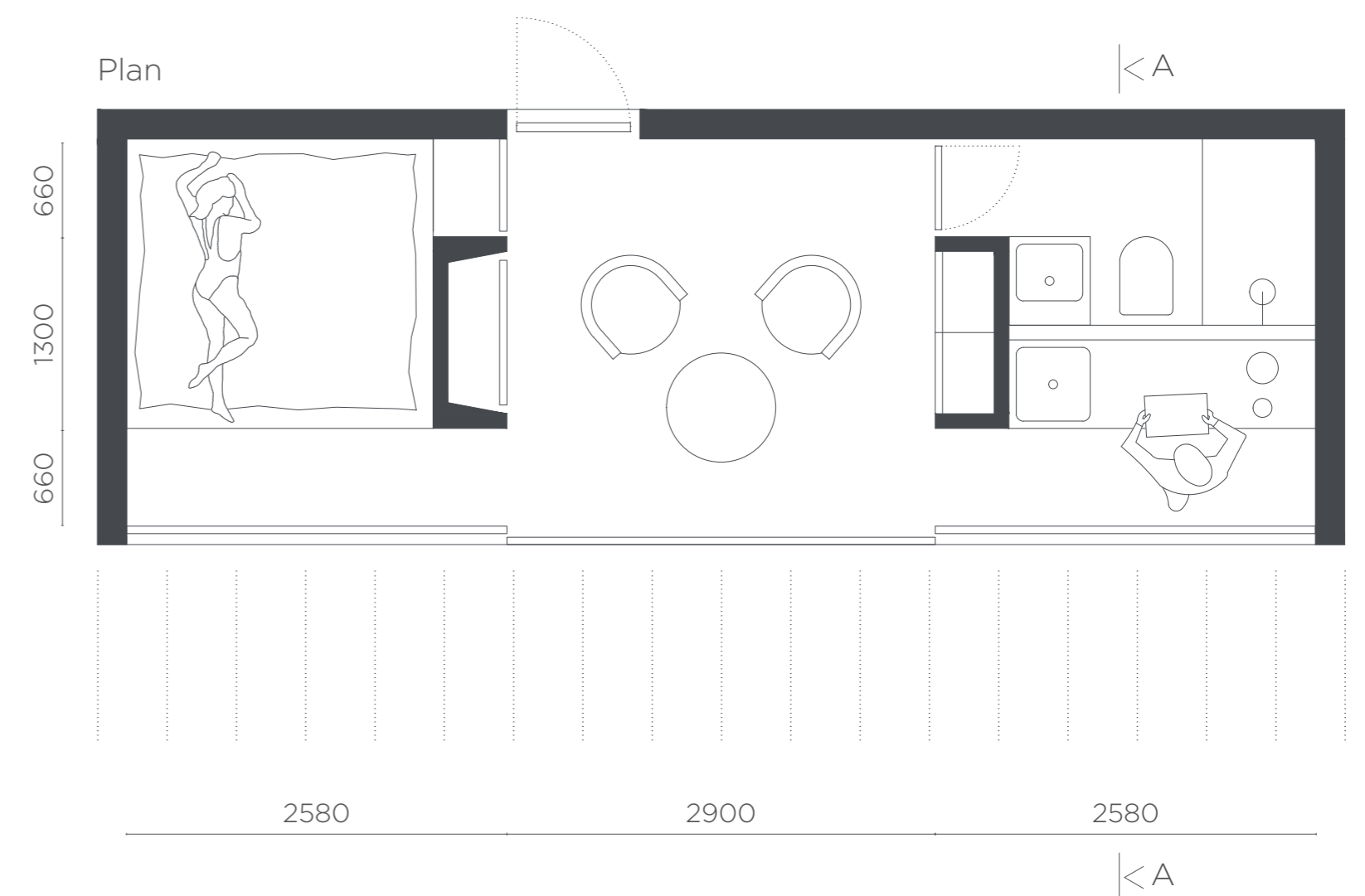


The flooring is industrial, thanks to which it is possible to make a heated floor. The vitrified glazing allows you to enjoy nature from any room. Decoration of partitions - veneer to create a pleasant tactile surface. Facade material - black fiber cement panels. Roof covering - rebated roofing

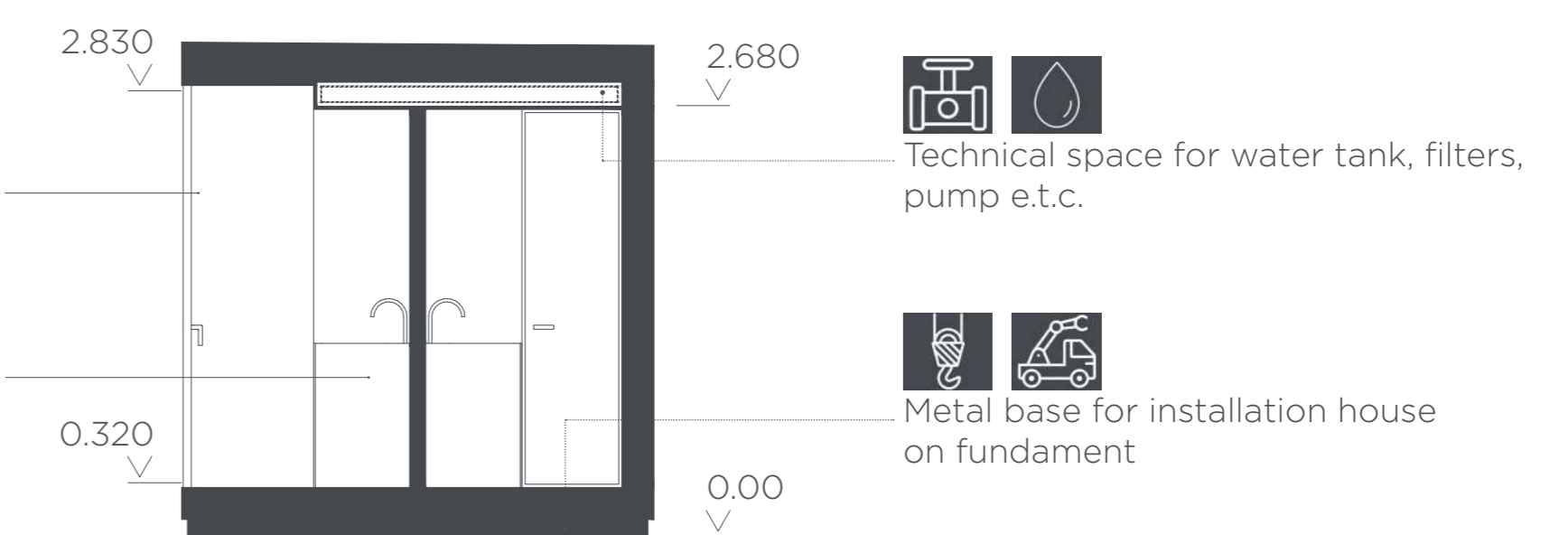
Front view



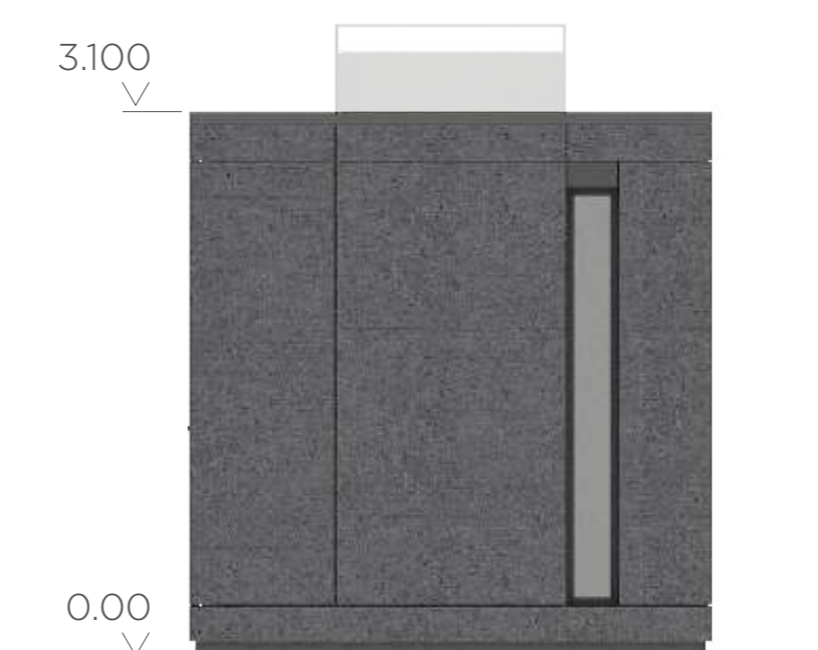
Plan



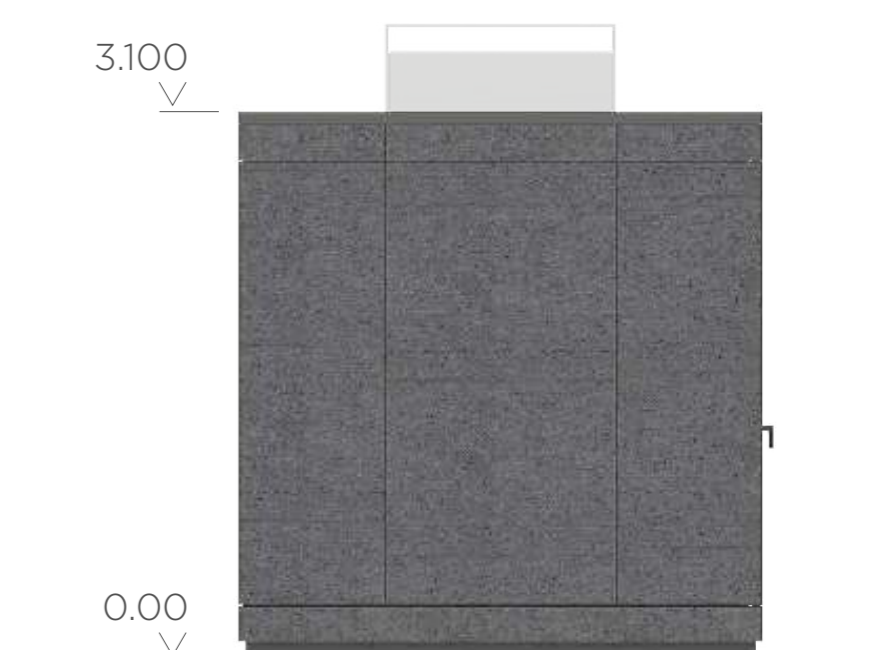
Section view A-A



Side view



Side view



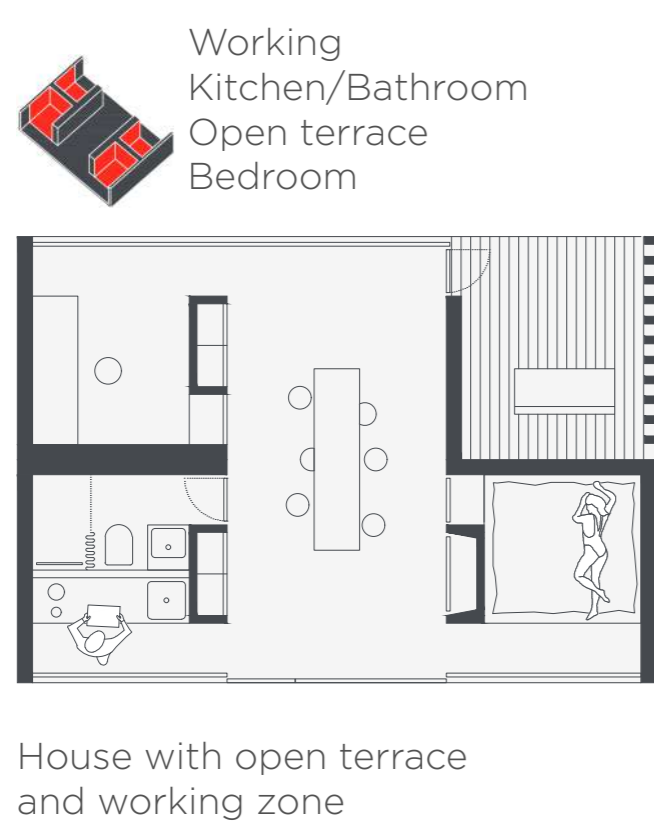
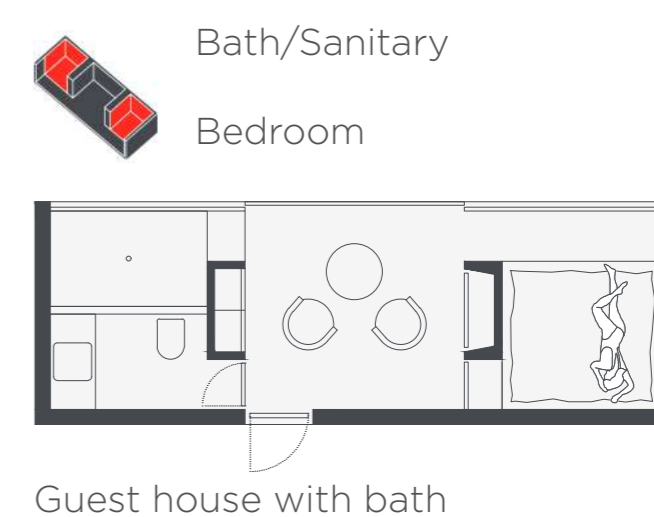
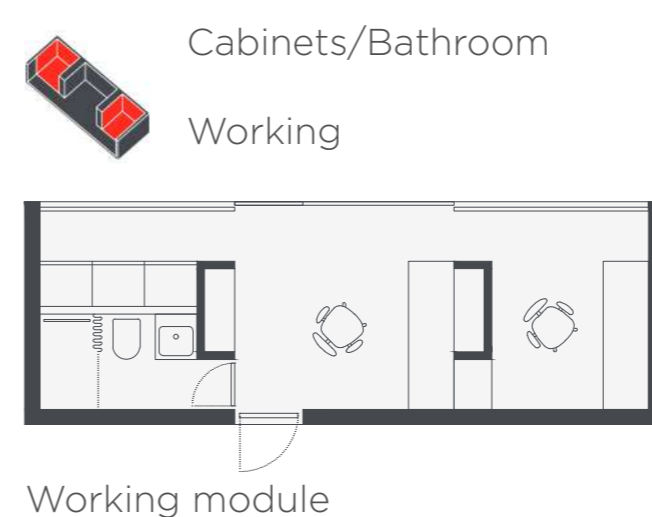
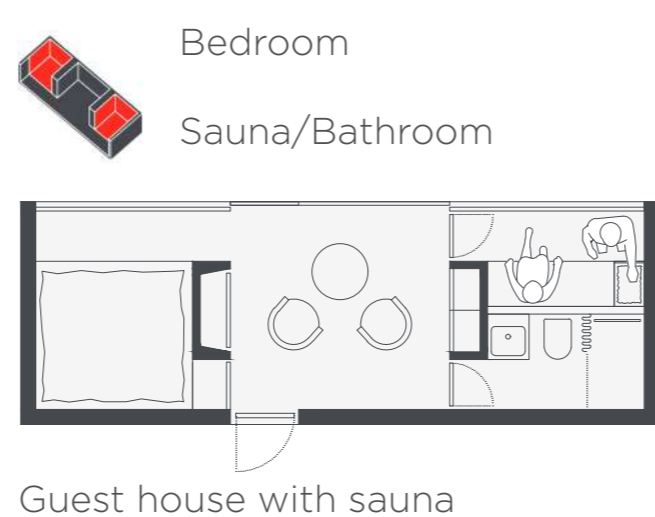
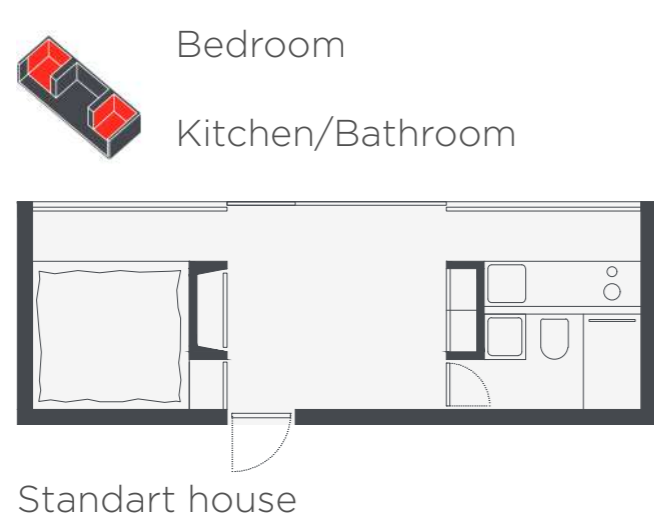
Back view





Interior view

### Examples of assembled houses



Livingroom

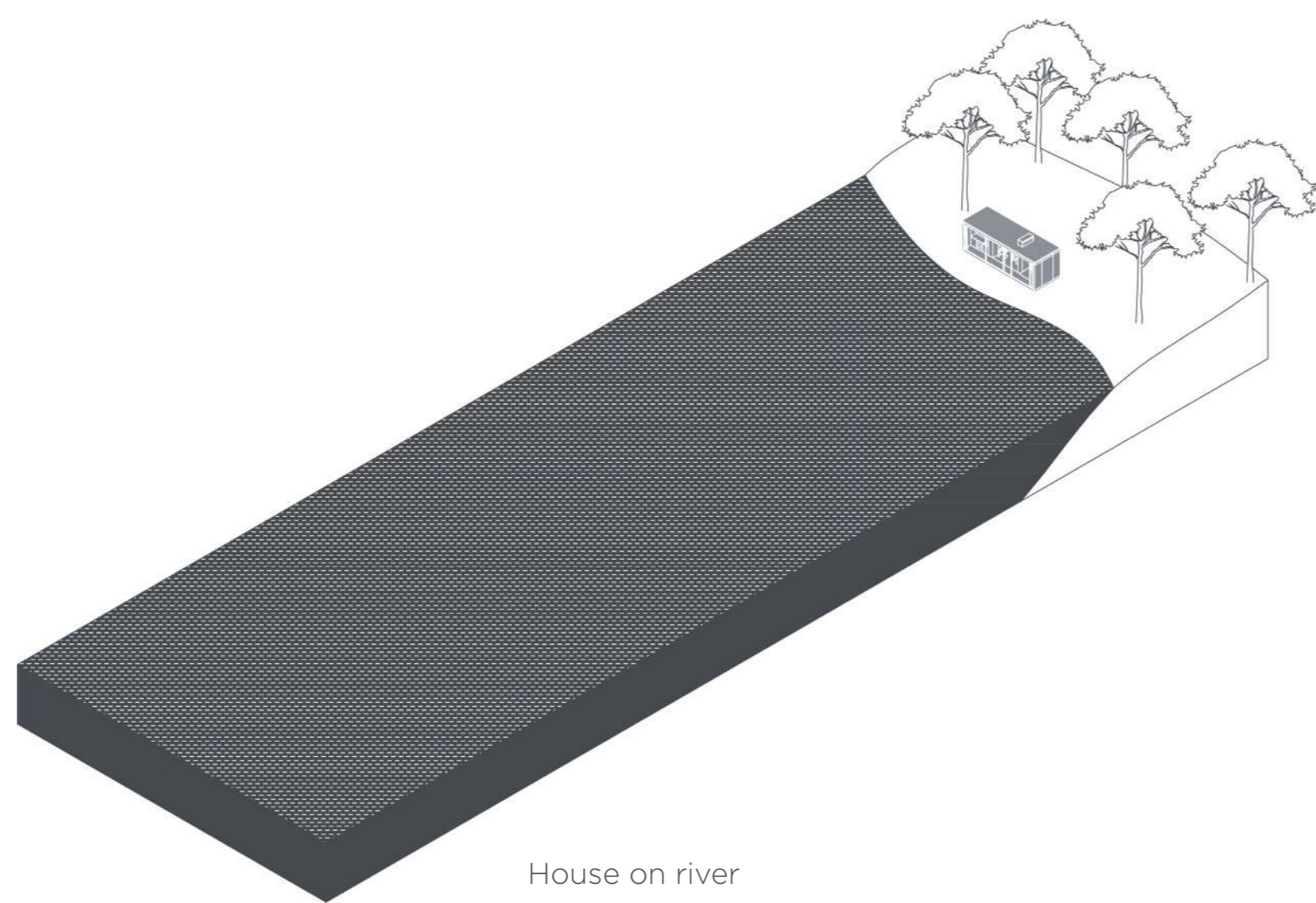


Bedroom



Enlarged house on river

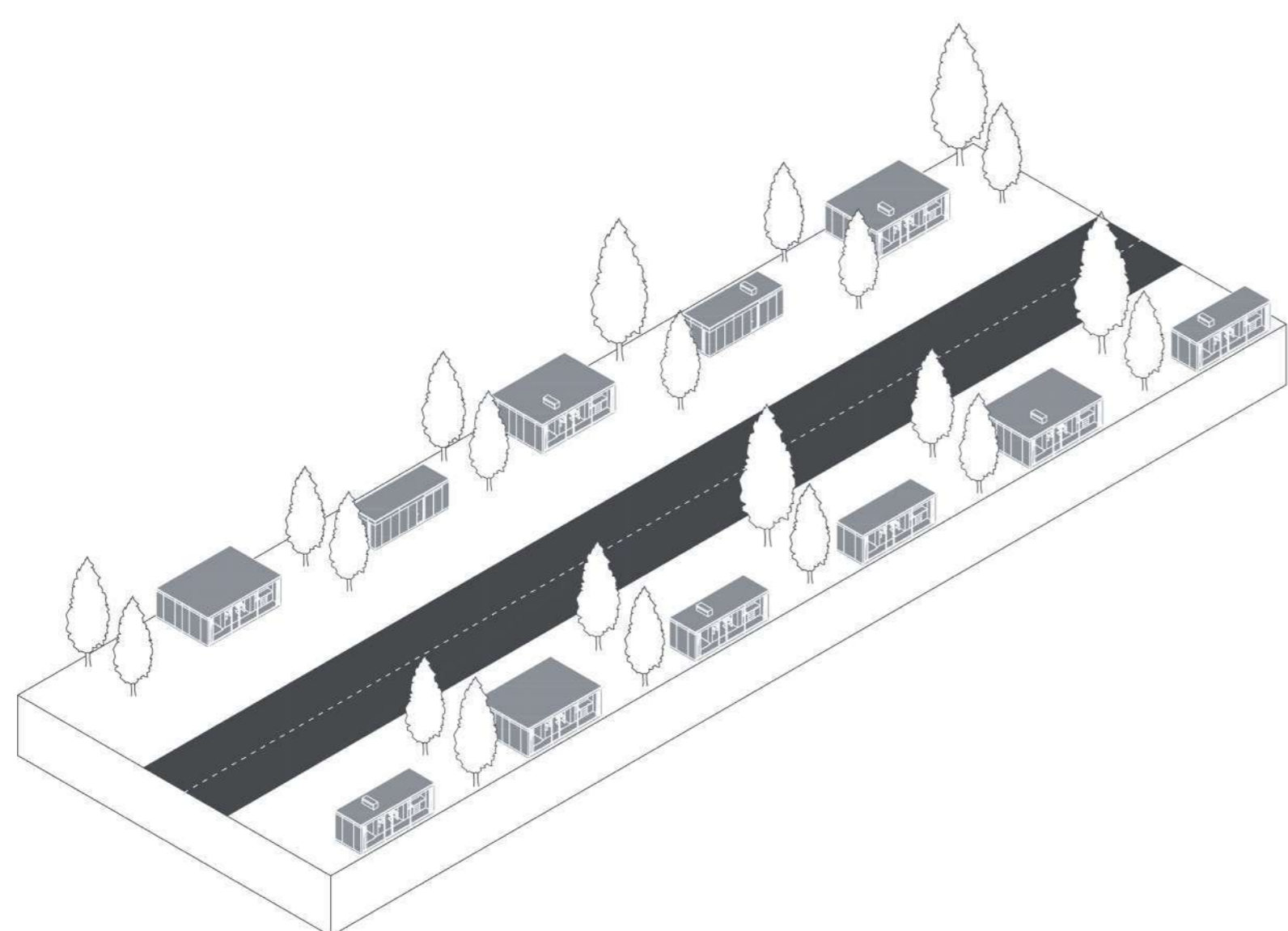
### Examples of location



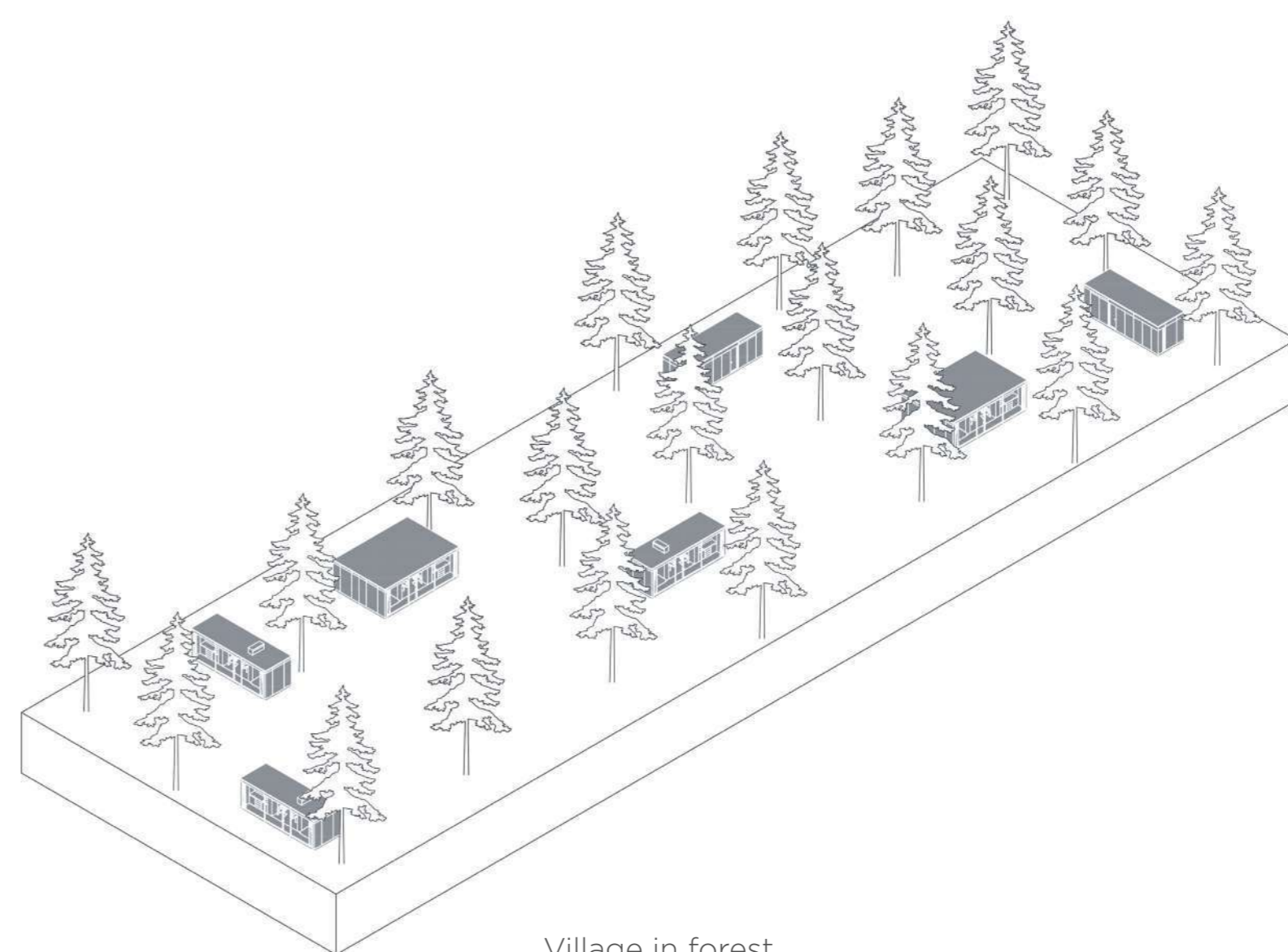
House on river



Ski village



Village



Village in forest