



Ryterna Module 2.0

Ryterna module 2.0 is a tool that allows users to design their future house out of given elements. Simple module design and construction, as well as several different ways of modules interconnection, lead to numerous possibilities of customizable design. An interactive mobile constructor helps users to design a unique house that will meet their specific needs.

Lisa, I've been thinking lately ... should we maybe buy a summerhouse somewhere outside the city?
Since now I can work most of the week from home and you are also not attached to any specific workplace we could occasionally run away from the city noises to the countryside and enjoy some fresh air and singing birds.

Oh, that sounds nice. I would love to spend more time surrounded by nature rather than a dusty city, especially during summer.
I wish we could build a house designed specifically for our needs, but it will probably be quite expensive and the construction itself will take too much time. Should we look for already built-up options?

Actually, several days ago I saw an advertisement for a firm that builds modular houses in a month or less.

But don't all those modular houses look boring and alike?

It depends. The firm, whose ad I saw claims that their special modular system allows to create unique and affordable houses.

- Interesting. Can we check their webpage, maybe?

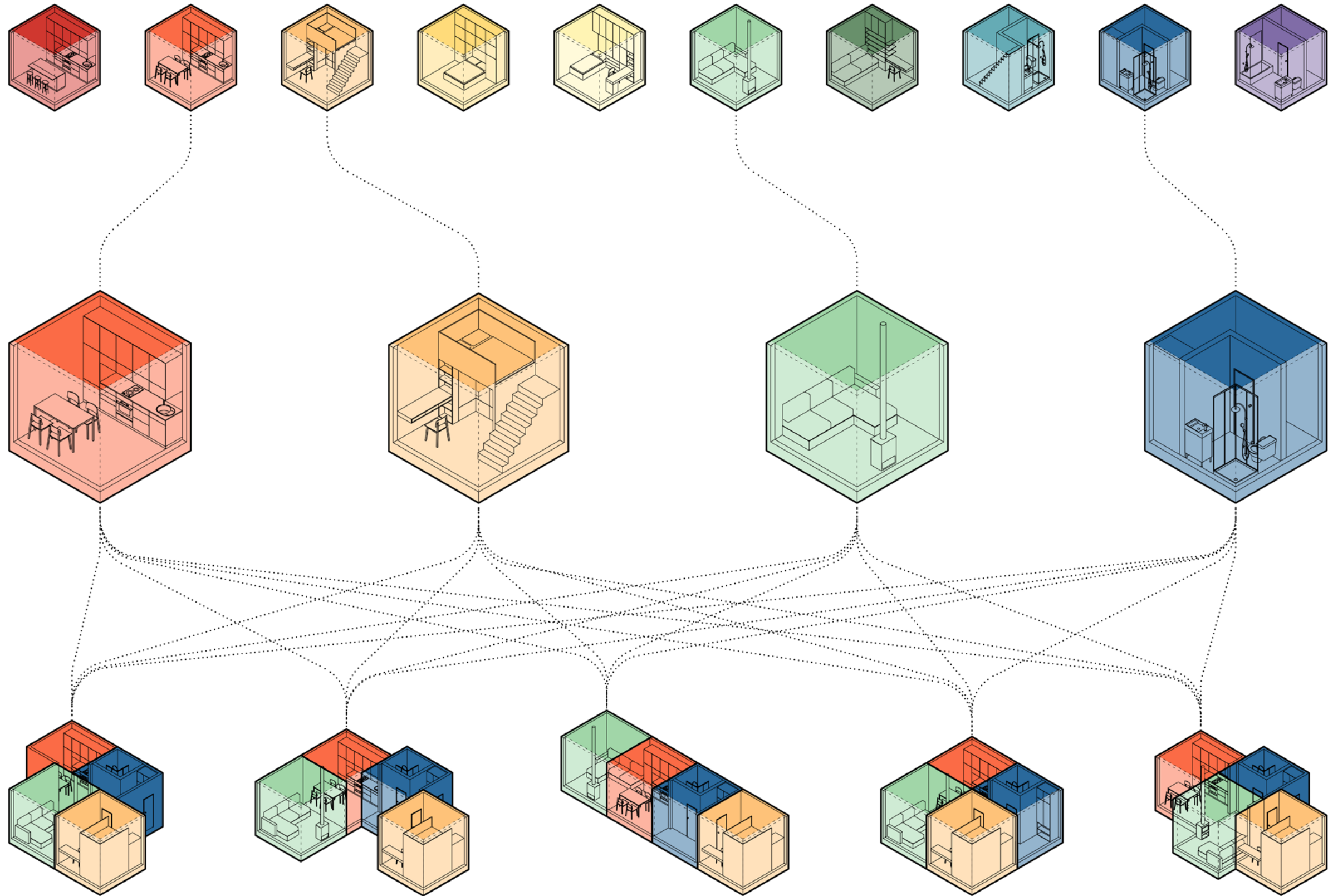
- Yes, they are called Ryterna module. Look, they offer to create our own prototype in an on-line constructor.



STEP 1

Choosing number and types of rooms

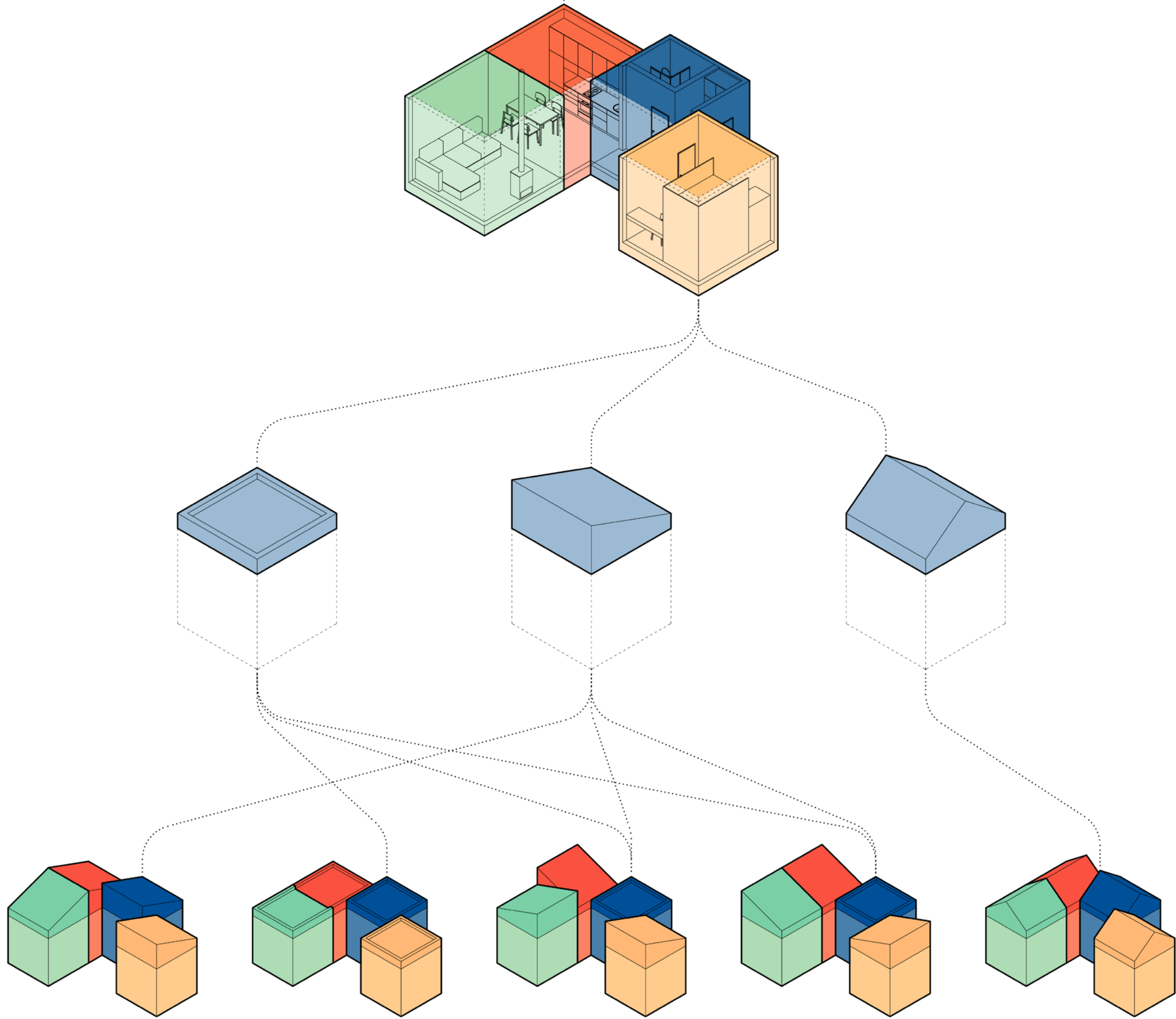
A number of predesigned types of rooms are available to choose among different types of kitchens, various layout options for bedrooms, living rooms bathrooms. The entrance area is usually combined with a bathroom in one module. Users are free to choose which rooms and how many to use for their future house.



STEP 2

Arranging rooms in custom layout

After preferred rooms have been selected users are free to arrange them in different layouts. Four different types of connections between modules allow to design custom house types. Users feel that they create something unique something suitable for their specific needs.



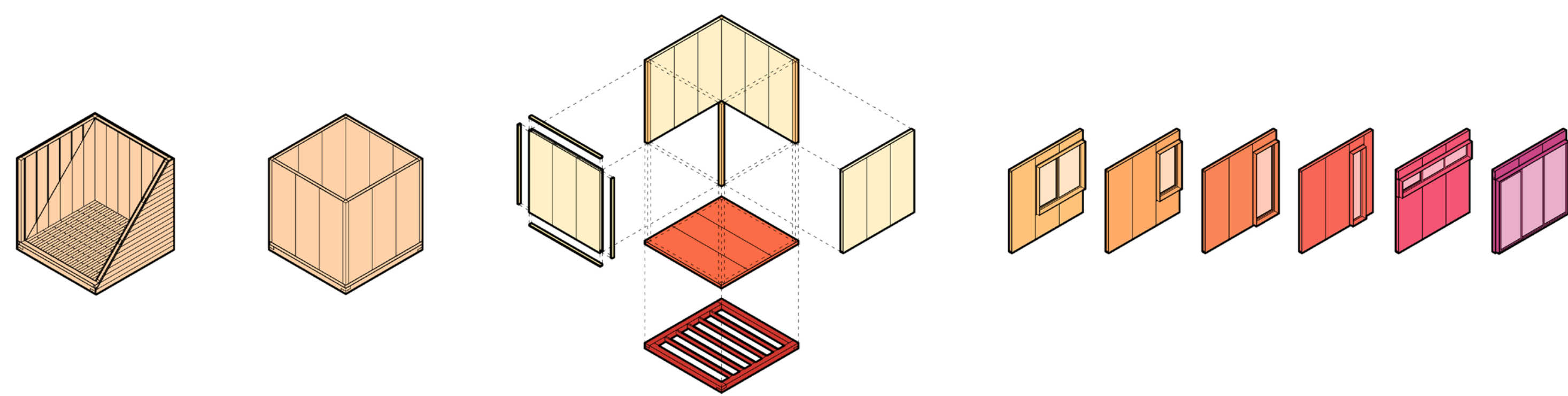
STEP 3

Coosing roof types and combinations

When final layout is chosen users move to choosing roof type (or types) for their future house. Three types are available: flat roof, one side sloped rood and doble sloped roof. All three types can be combined and arranged freely. It all depends on user's imagination.

After the basics of design making is finished, details of the future house can be discussed with a Ruterna Module specialist. All construction details then can be finalized, basic modules produced, and transported, and assembled on a site.

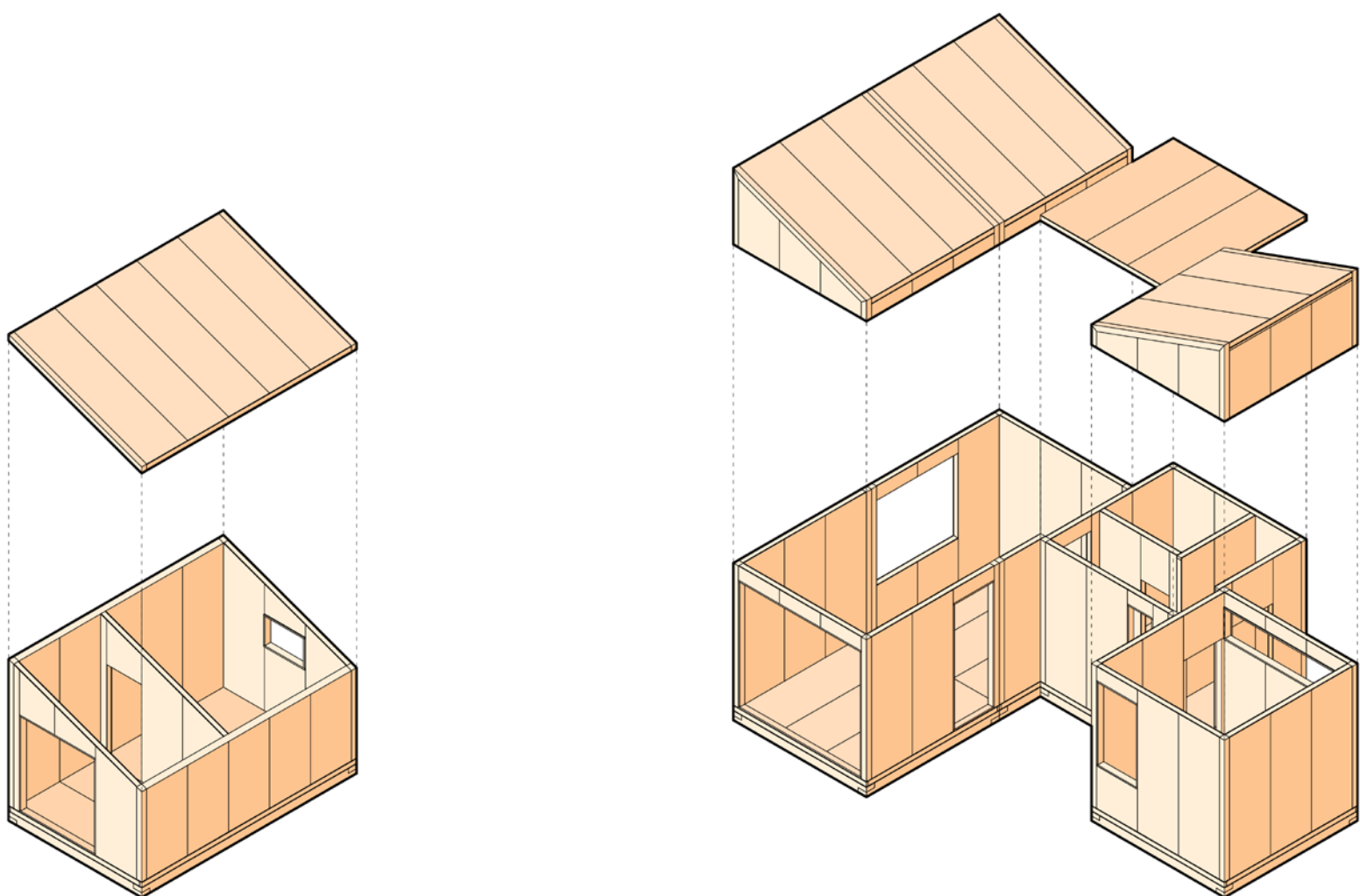
THE MODULE



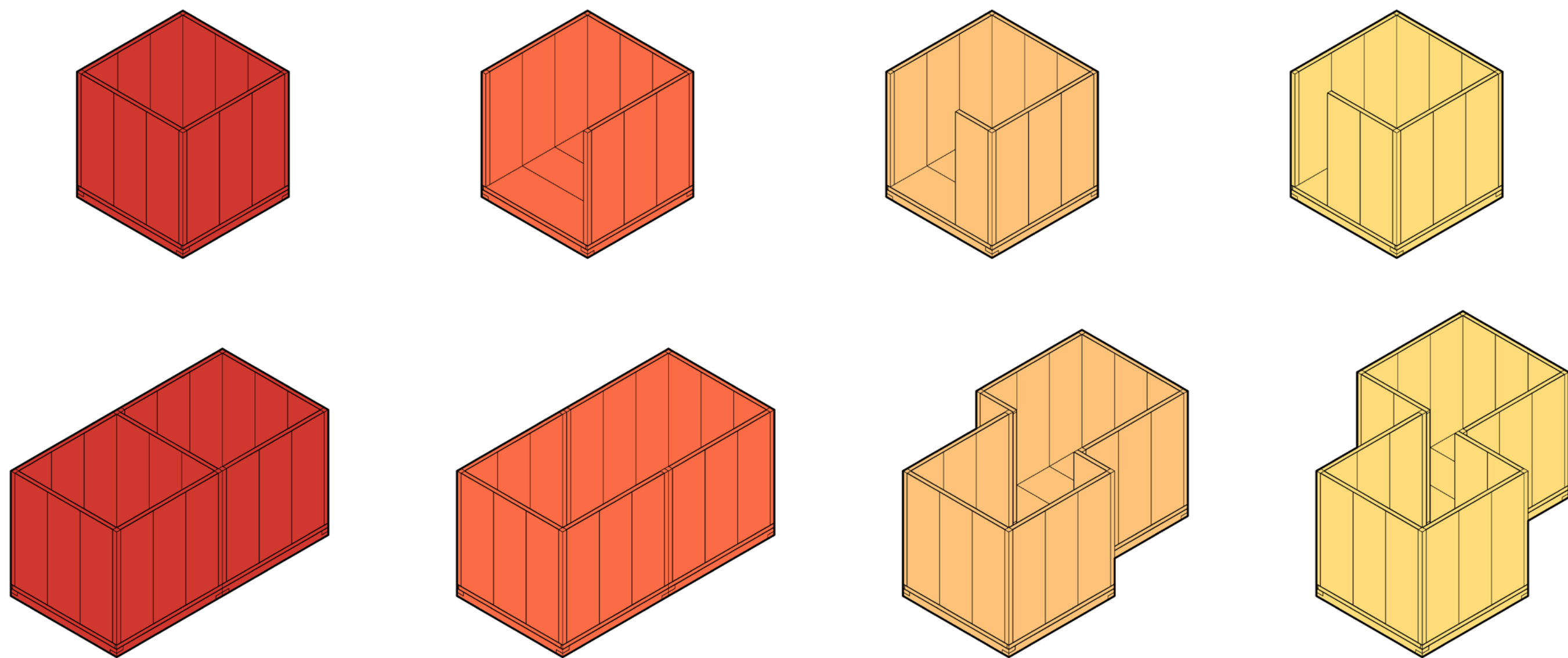
The structural module is cubical in shape and 3248(L) x 3248(W) x 3324(H) mm in dimensions. It is made out of SIP panels and timber structural elements. The SIP walls installed between timber columns which allows one to remove one of them without structural damage. The base of the module is a platform made out of SIP panels laid on top of the foundation frame.

Several types of walls with preinstalled windows and doors allows creating unique modules and house variations.

HOUSE AND SAUNA STRUCTURES



MODULE CONNECTIONS



Type 1 - closed

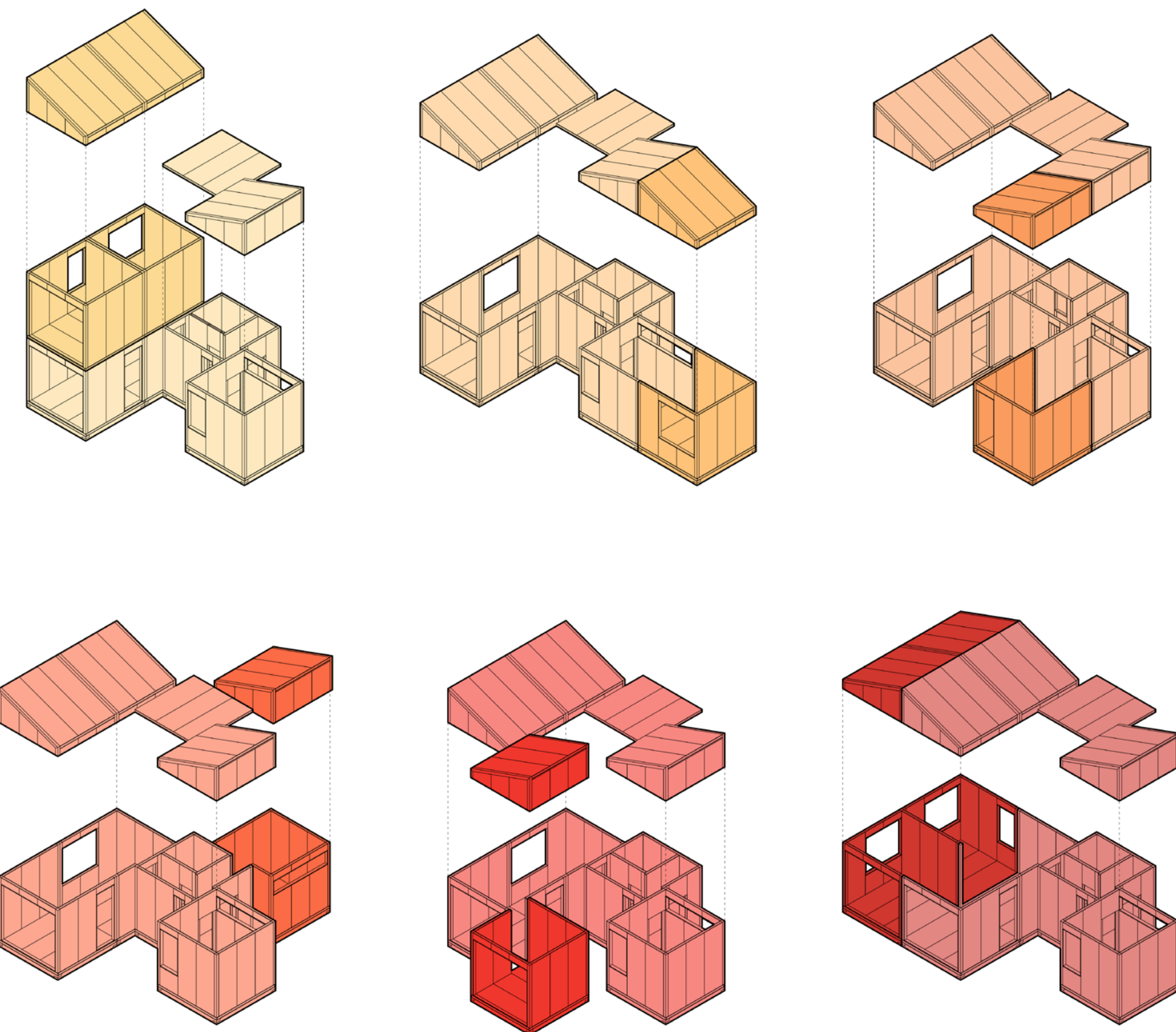
Type 2 - opened

Type 3 - 2/3 opened

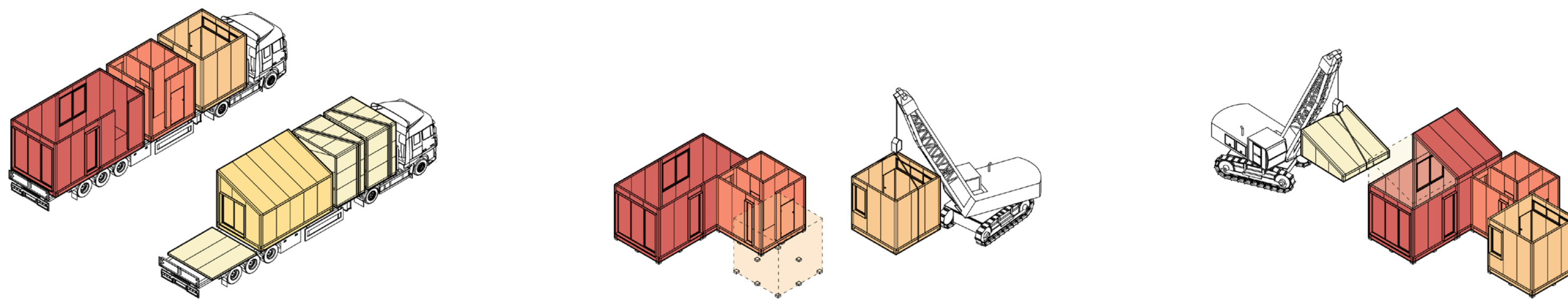
Type 4 - 1/3 opened

Each wall of the module consists of 3 SIP panels. The module can be fully closed or, by removing one or two or all three panels, it can be partially or fully opened. Combining modules of different types of openness/closeness different types of layouts can be created.

HOUSE STRUCTURAL EXTENTION VARIATIONS

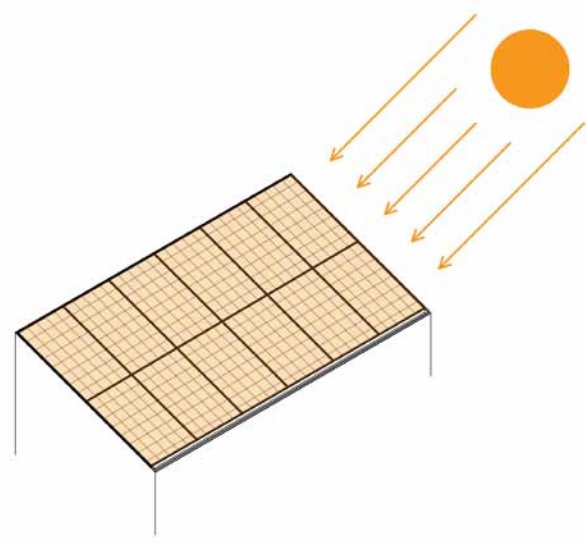


MODULE TRANSPORTATION AND INSTALLATION

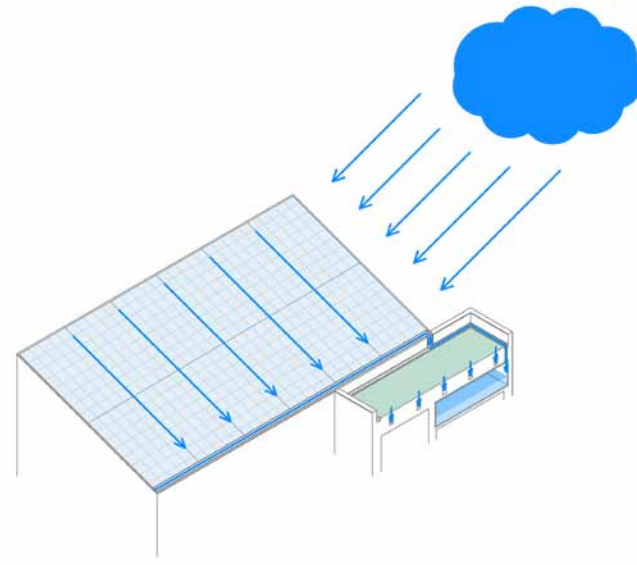


Core modules and roof modules delivered to the construction site and installed one by one on the chosen type of foundation. Roof details are installed last. The modules can be delivered on-site with a facade and interior finishings or they can be done after the installation to avoid visible seams.

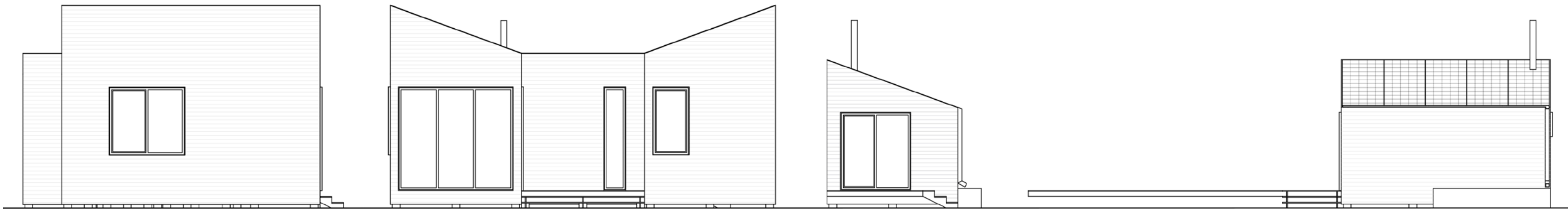
SOLAR POWER AND RAINWATER COLLECTION



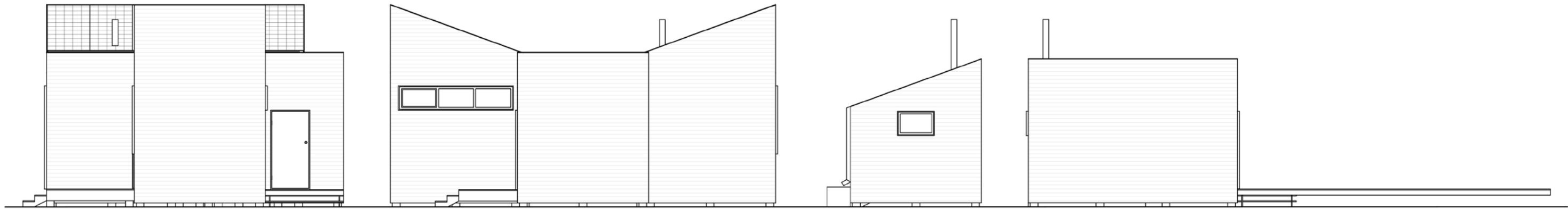
Solar panels are integrated in the roof structure .



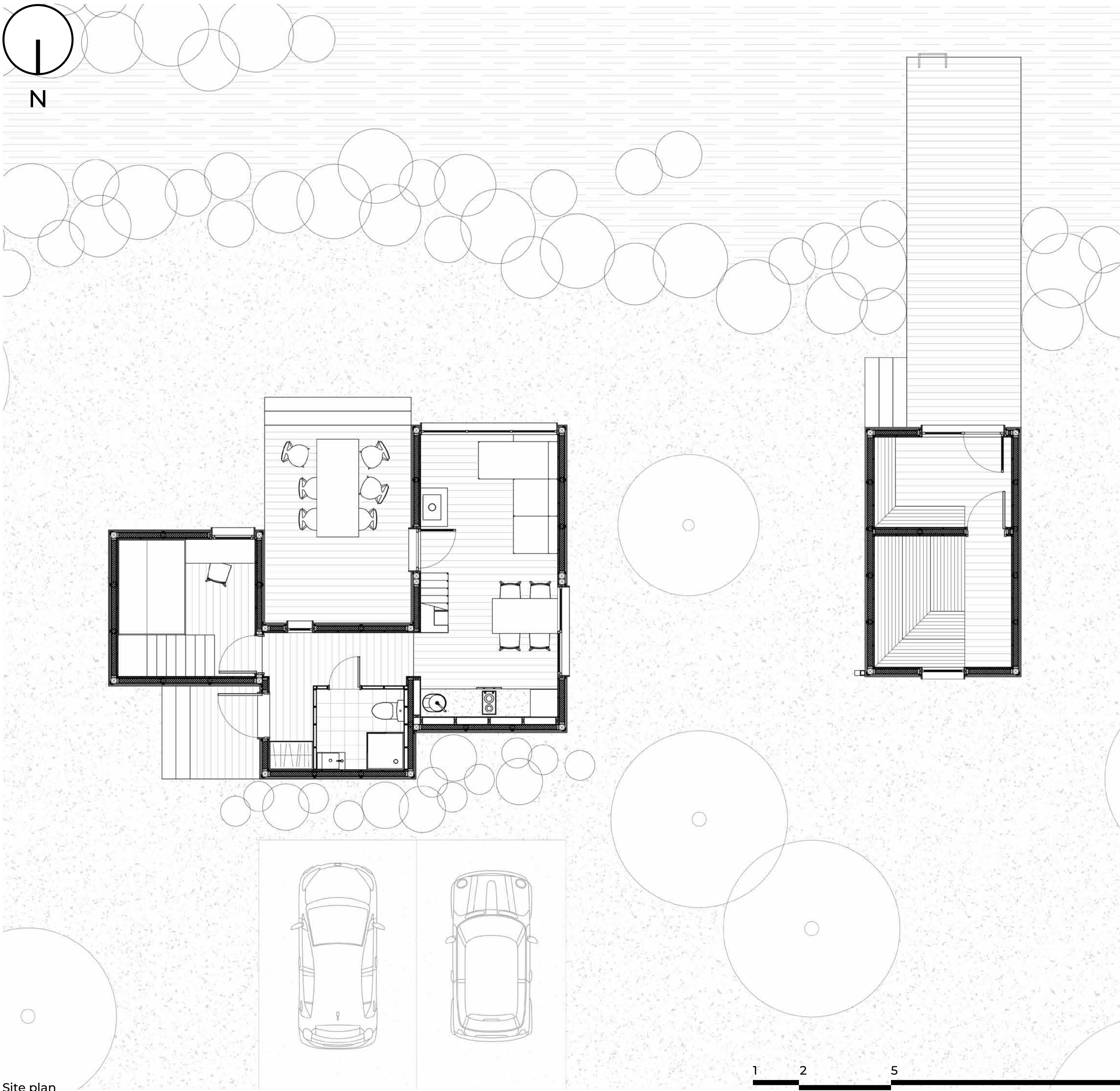
Roof slopes and gutter direct rainwater to a storage tank above the bathroom.



House West facade House South facade Sauna South facade Sauna East facade



House East facade House North facade Sauna North facade Sauna West facade

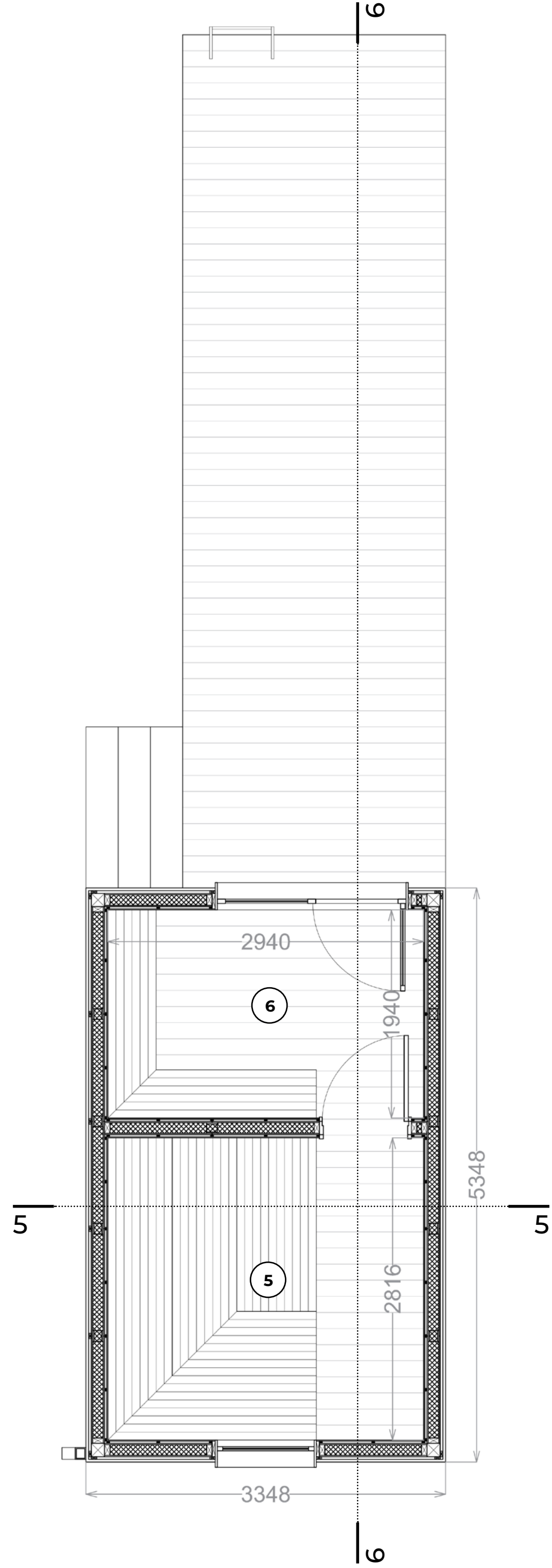
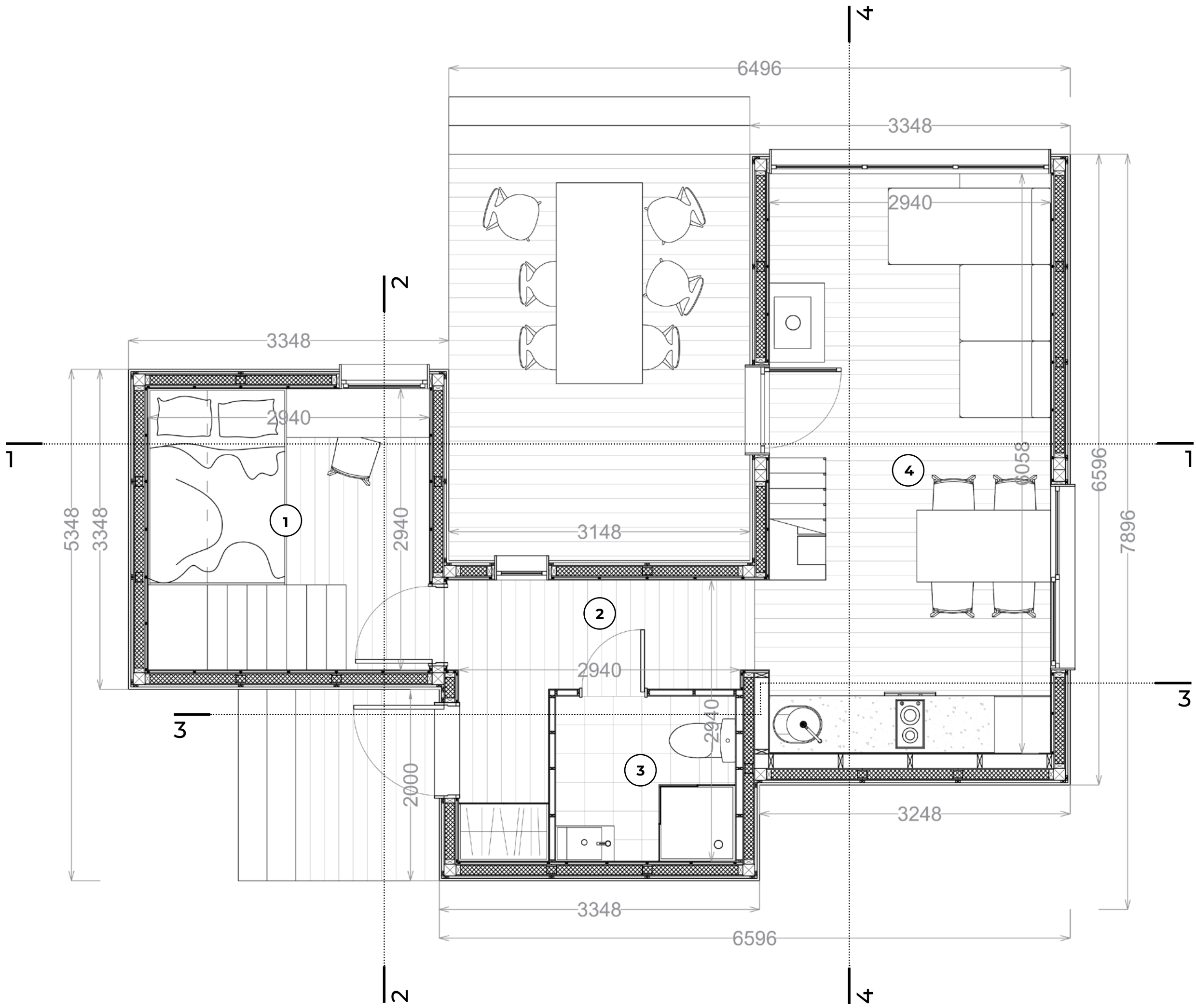


Site plan

1 2 5

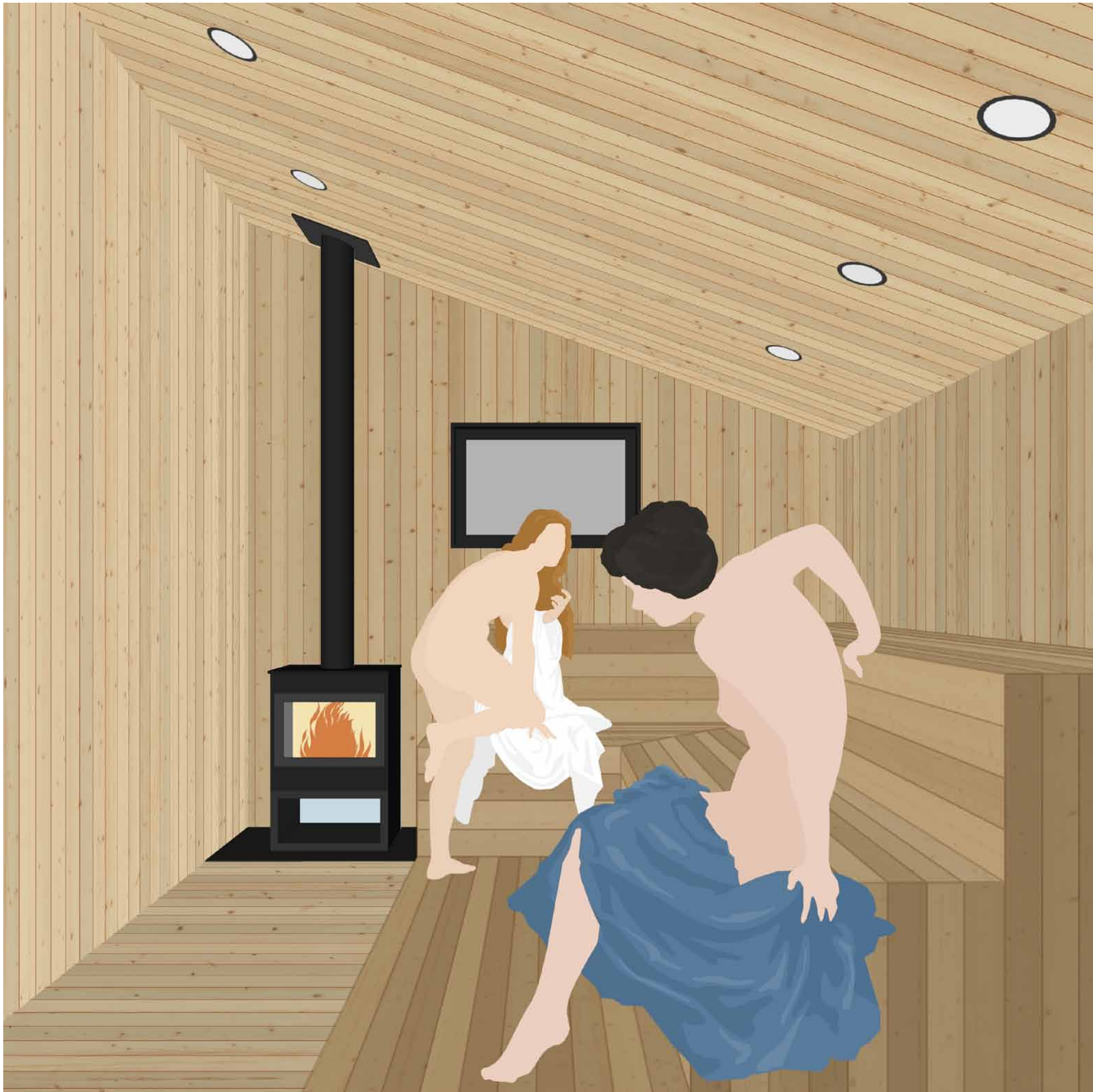


- House**
1. Bedroom 8,7 m²
2. Entrance/ Hallway 4,7 m²
3. Bathroom 3,2m²
4. Kitchen/ Living room 17,9m²
Total: 34,5 m²
- Sauna**
5. Sauna hot room 8,3 m²
6. Sauna anteroom 5,7 m²
Total: 14 m²



Plan

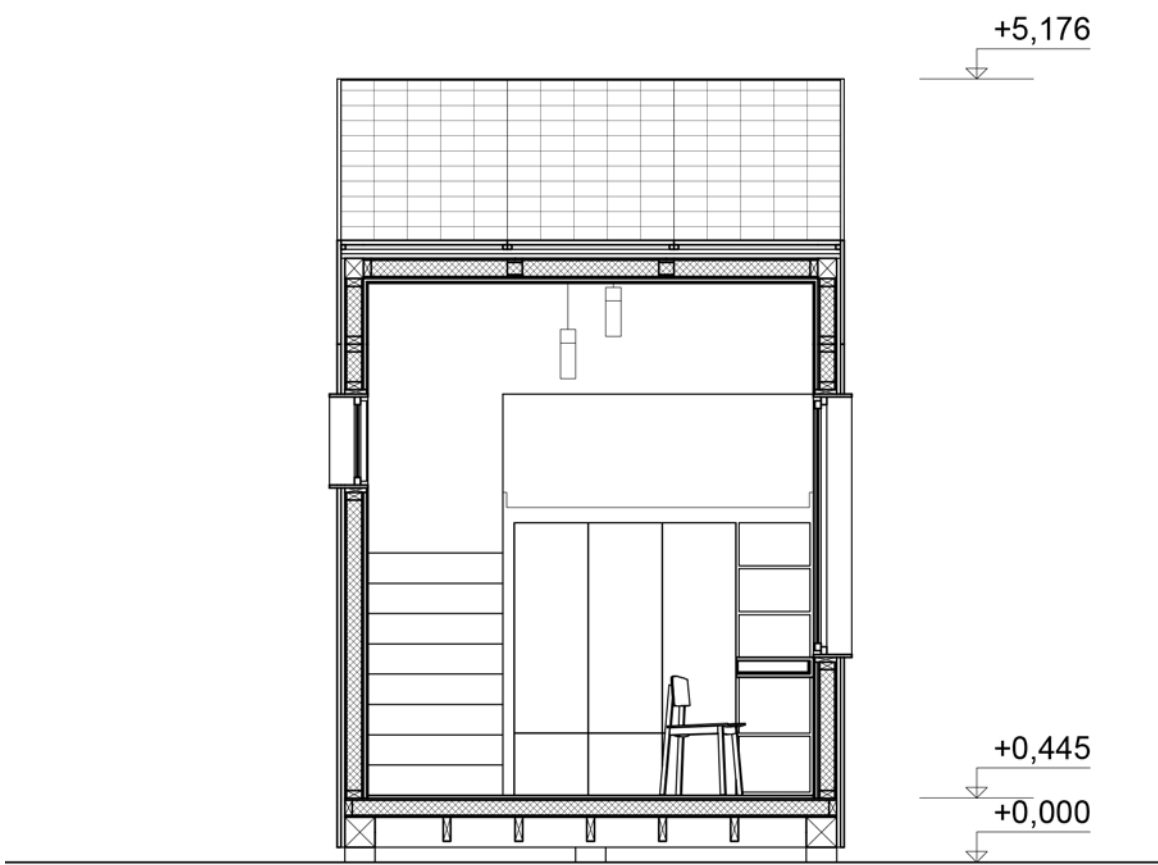




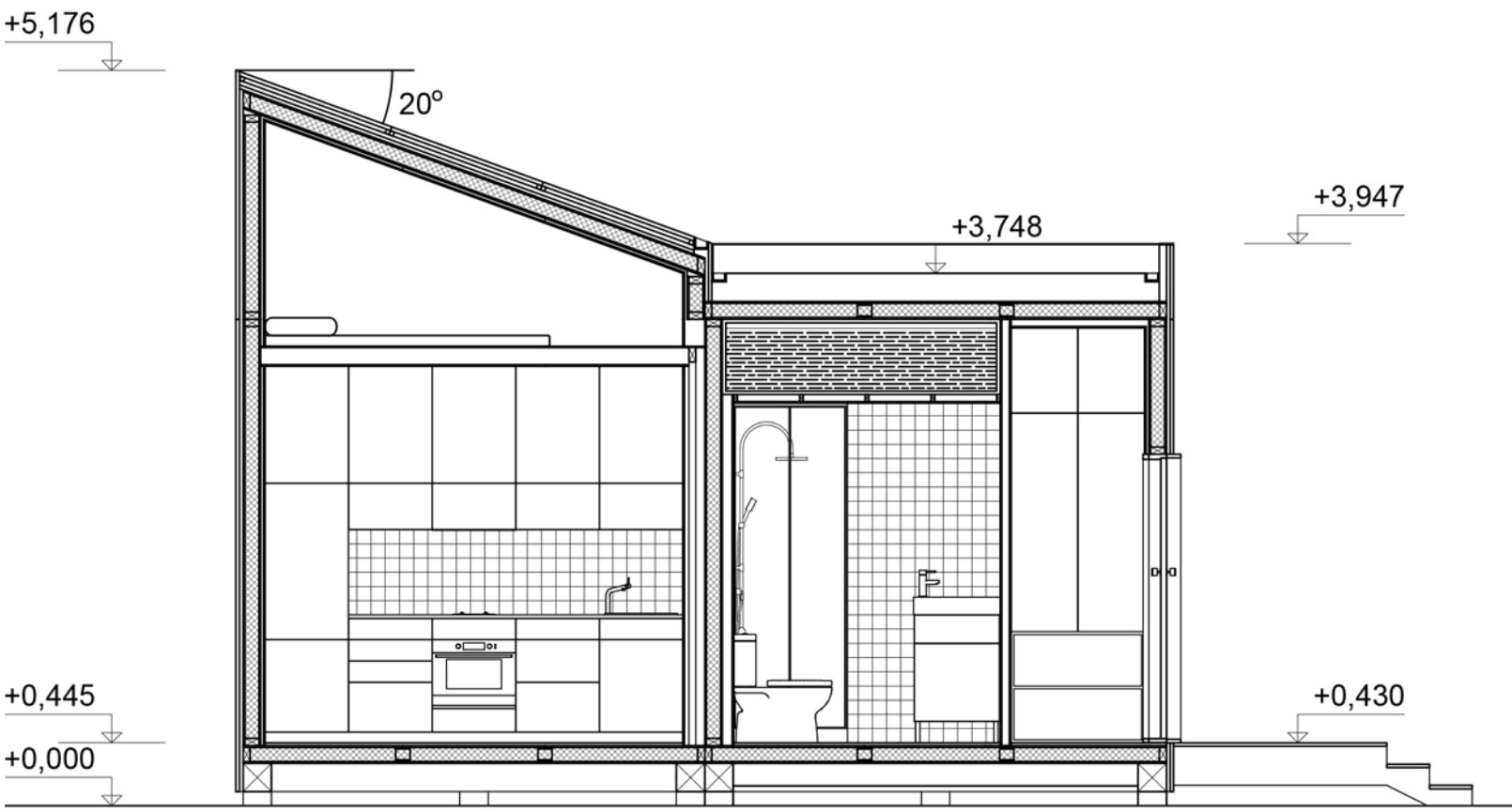
1 - 1



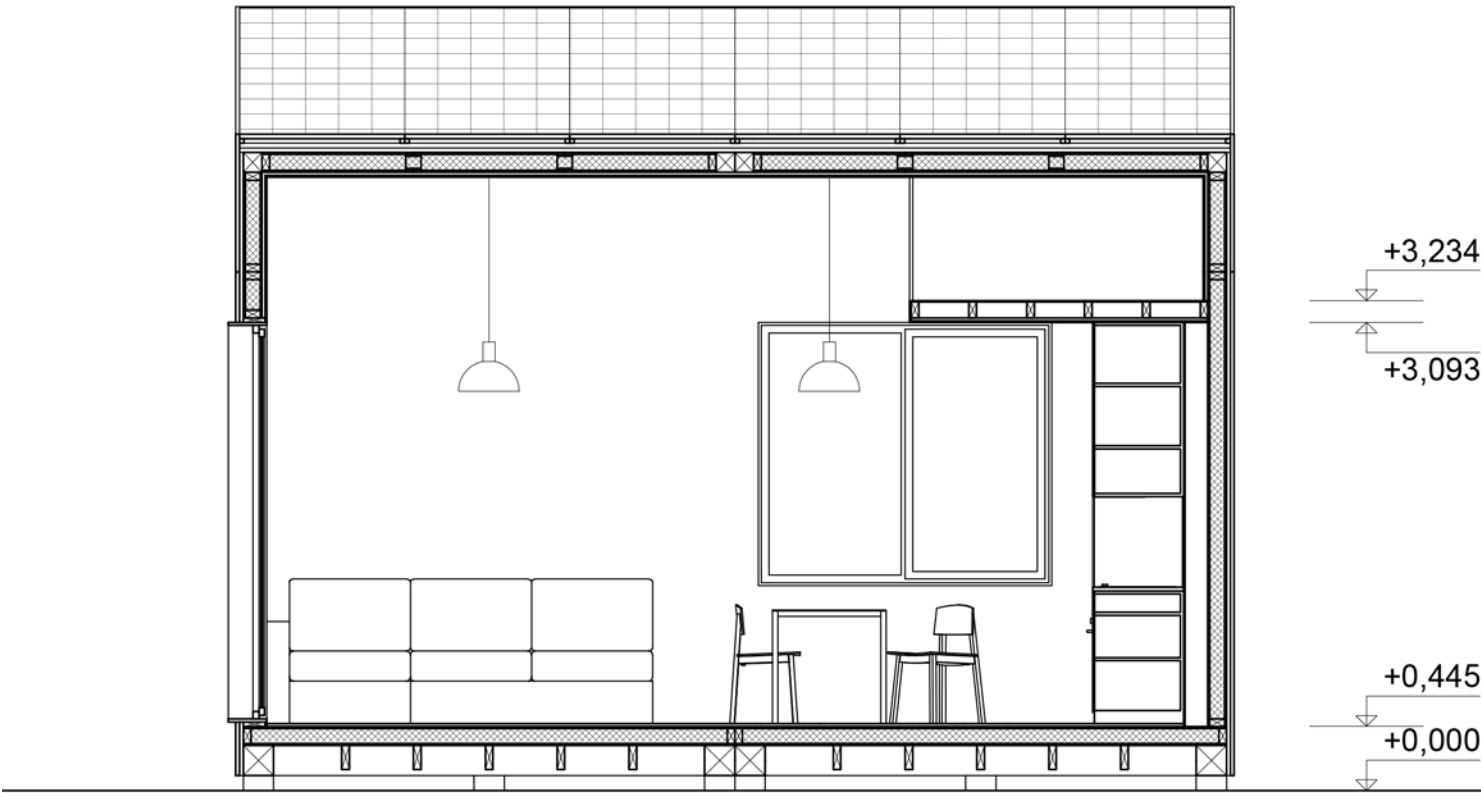
2 - 2



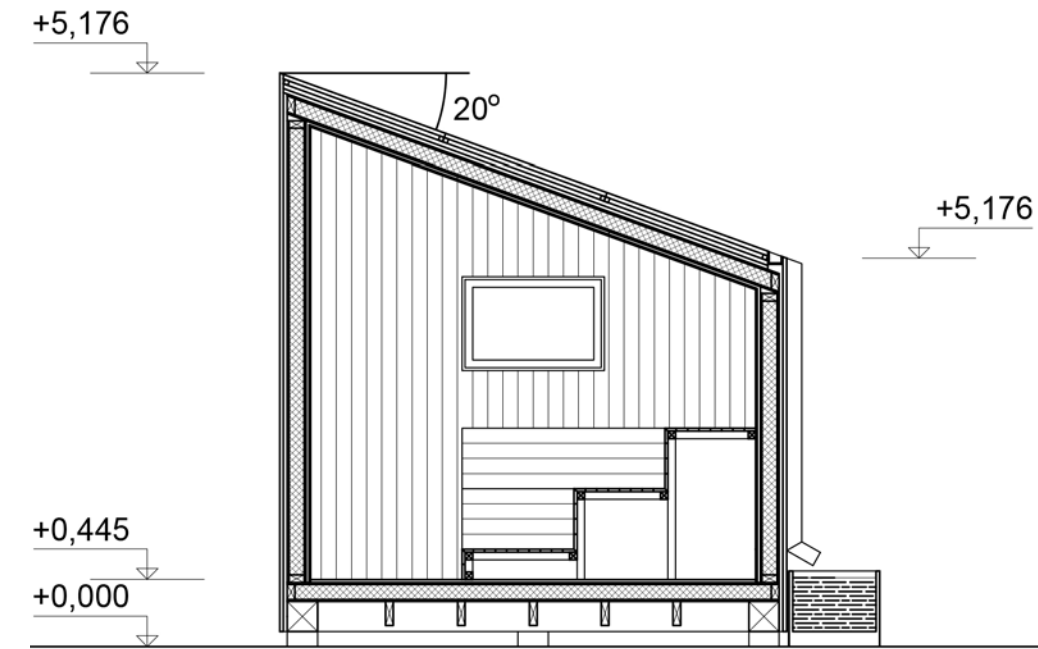
3 - 3



4 - 4



5 - 5



6 - 6

