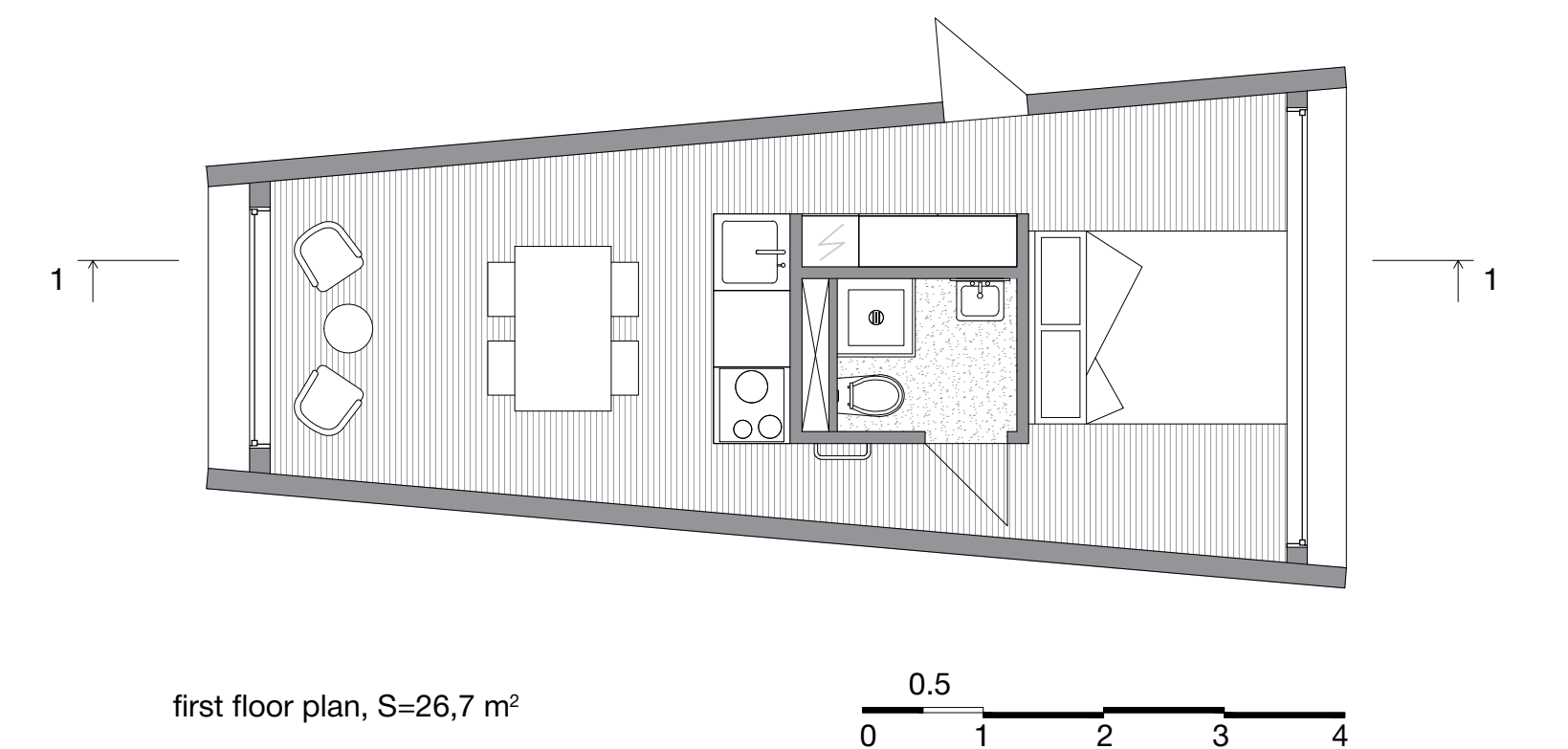
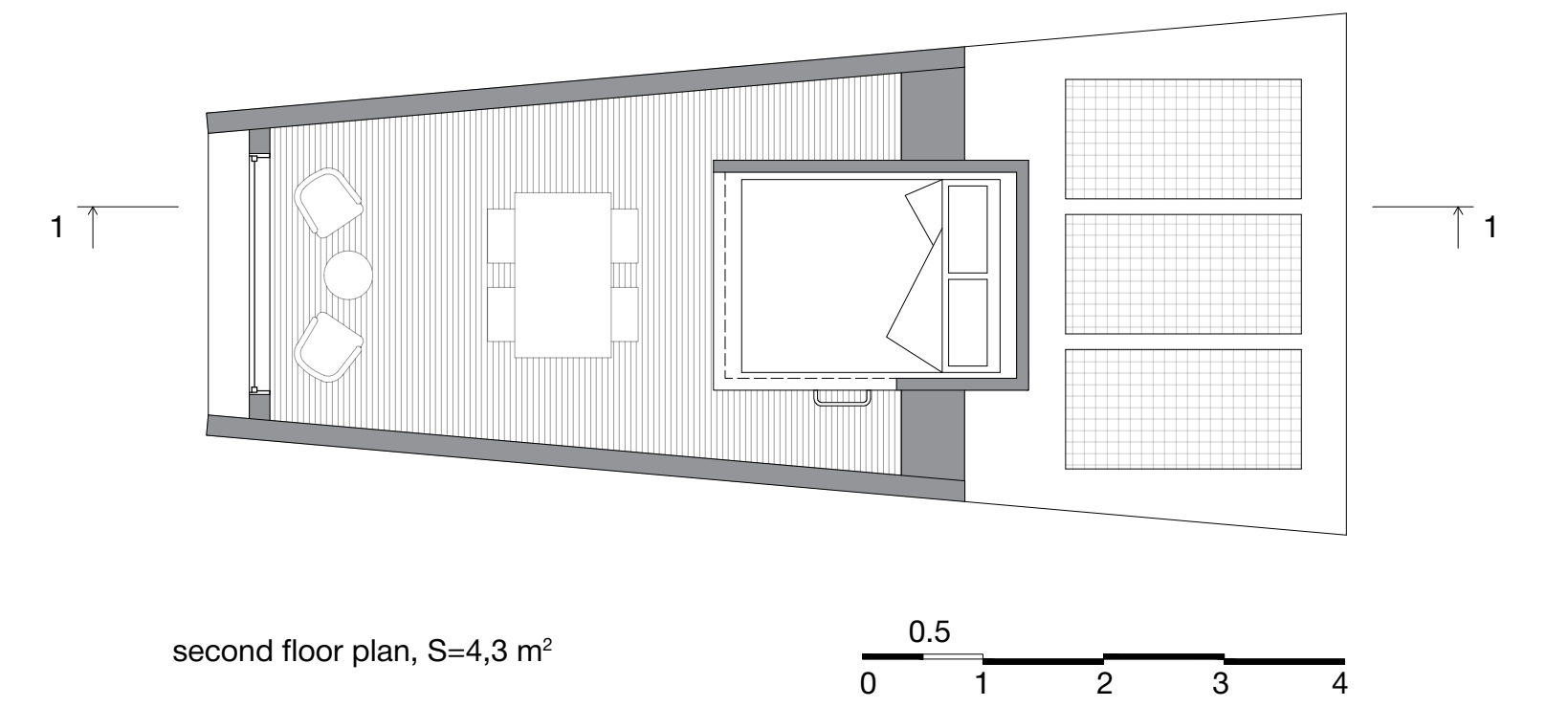
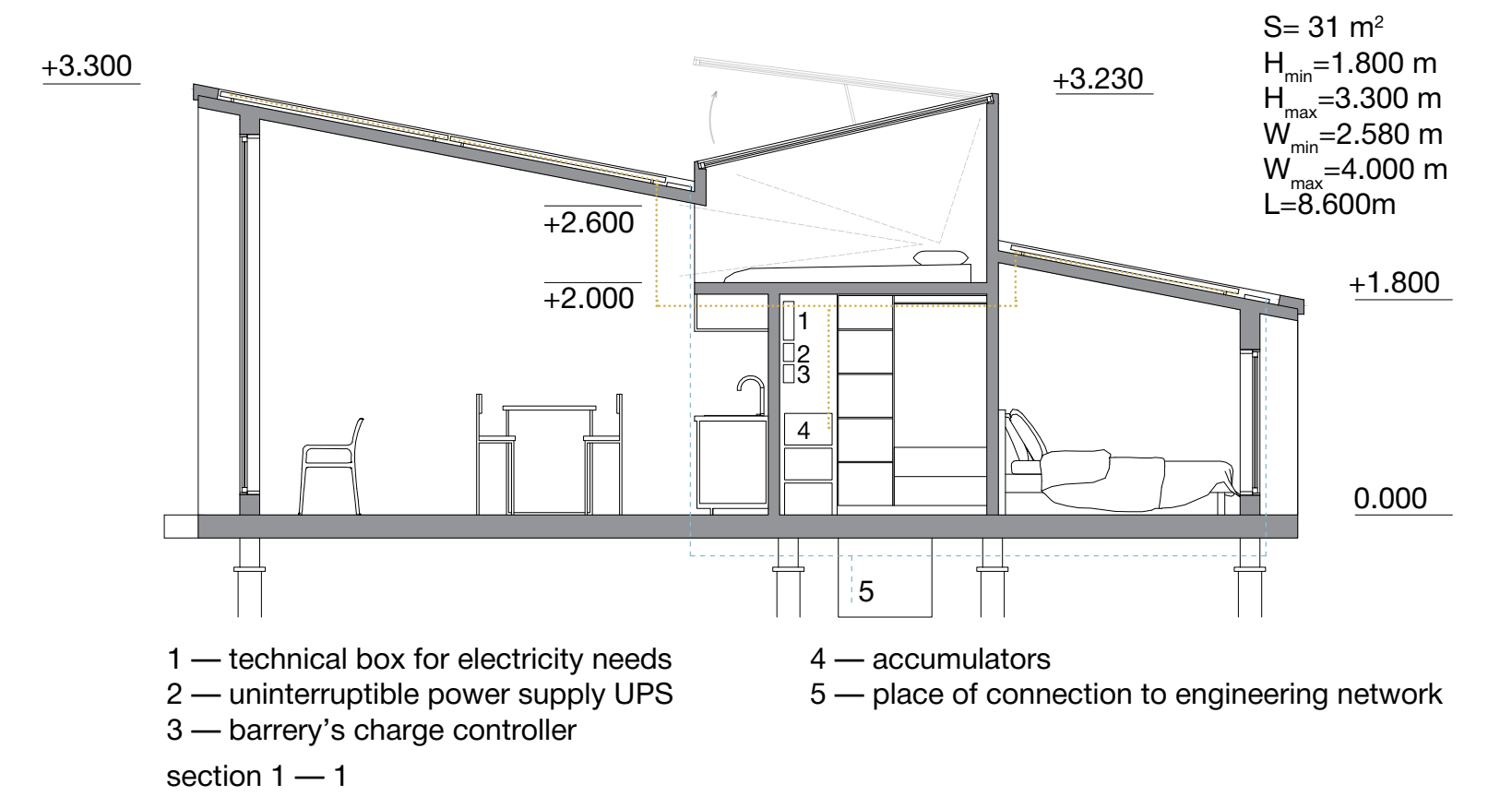
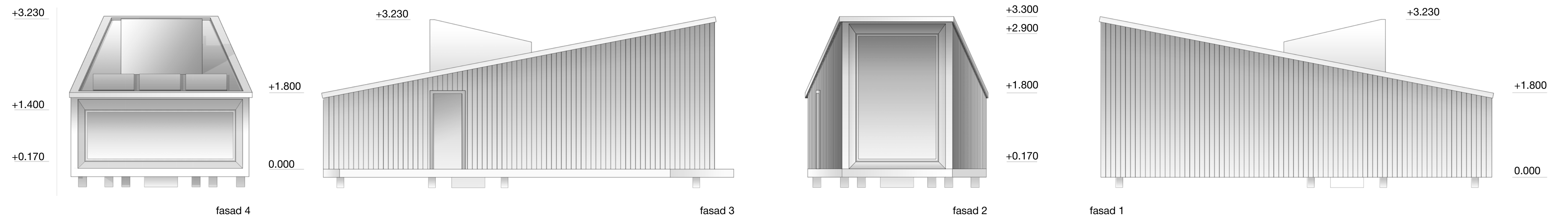
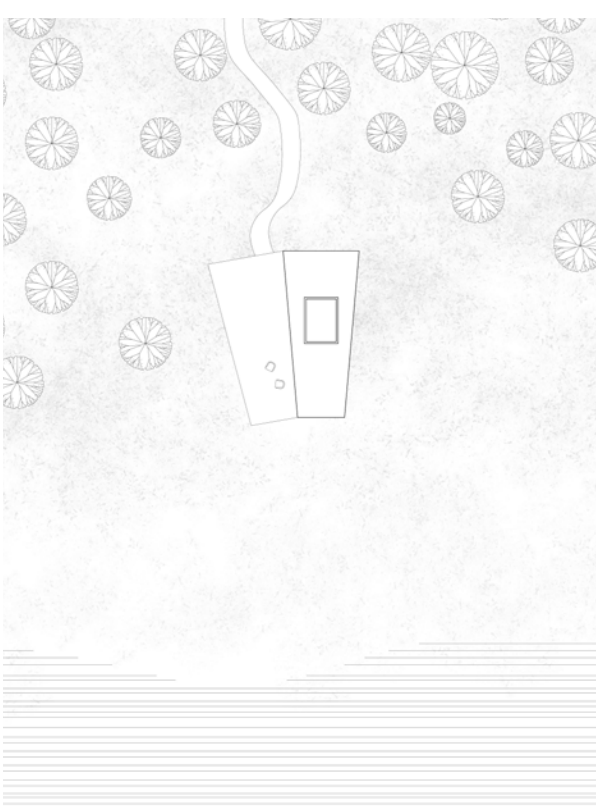




1400065001



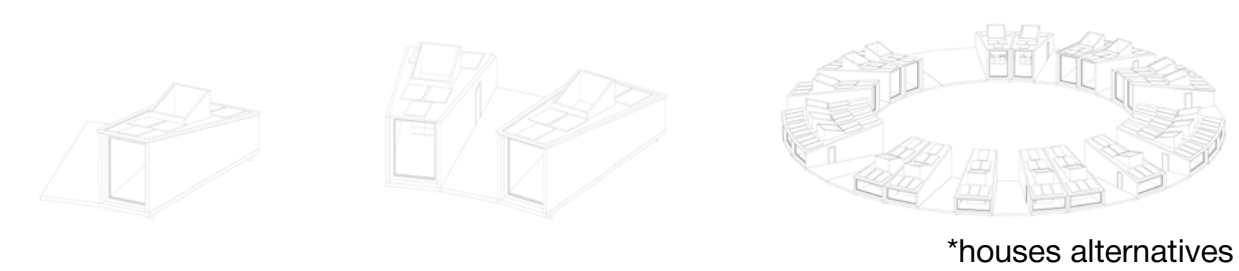
The house and sauna are like two beacons in the landscape. During the day, they are reflected on the water surface, when at the night they create a silhouette resembling mountains. Blank walls anchor the space and provide a feeling of refuge, and panoramic windows concentrate blurring the boundaries between house and nature. The roof has glass lanterns. Through them, it is convenient to observe the starry sky and the crowns of trees. The complex of houses and sauna does not have a fixed base and can be arranged in any form and adapt to the conditions of the design site and terrain. The objects are compact and consist of SIP-panels. They can be brought in assembled condition or assembled locally. These modules will make you feel comfortable in the heart of nature and gives you perfect conditions to detox your mind.

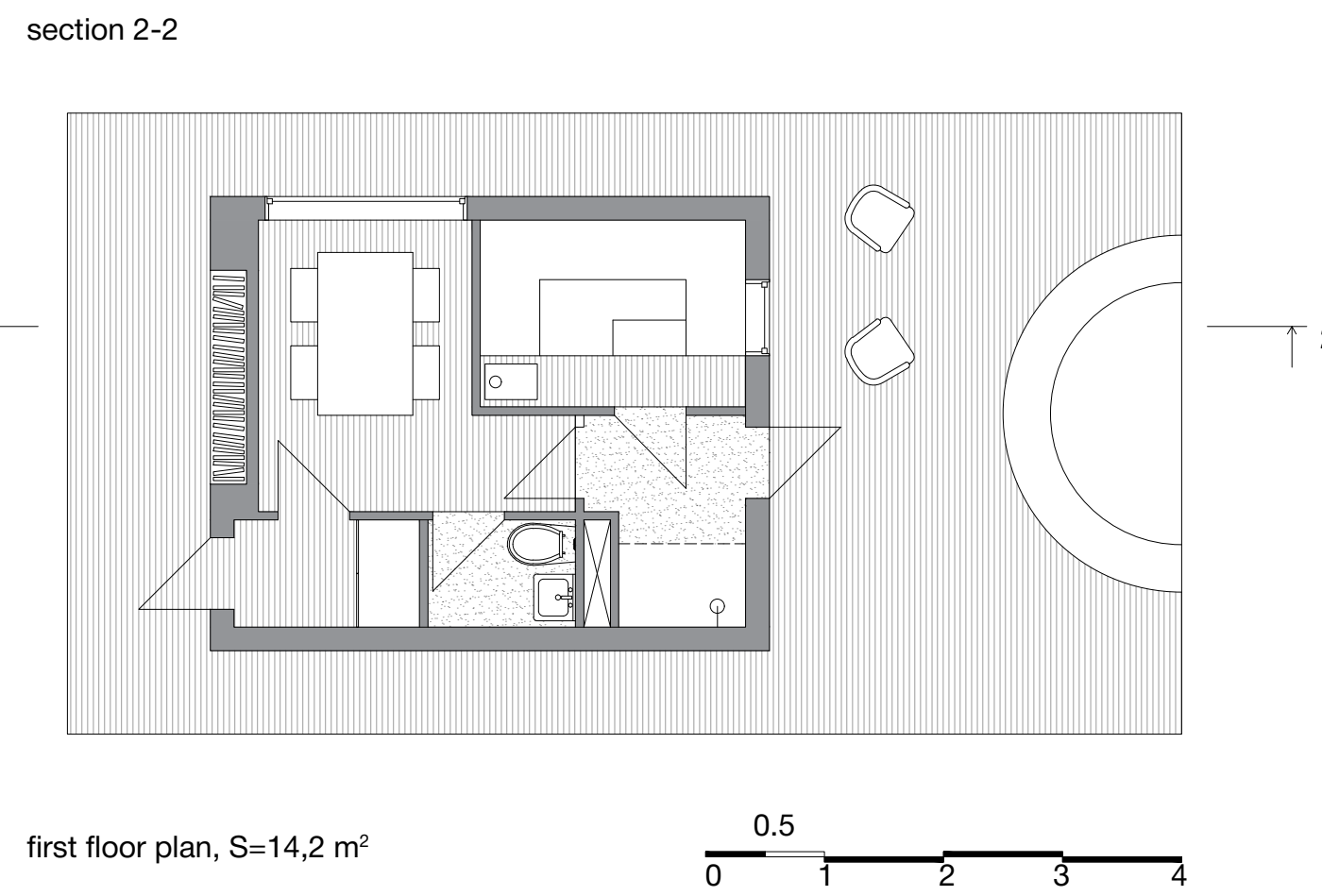
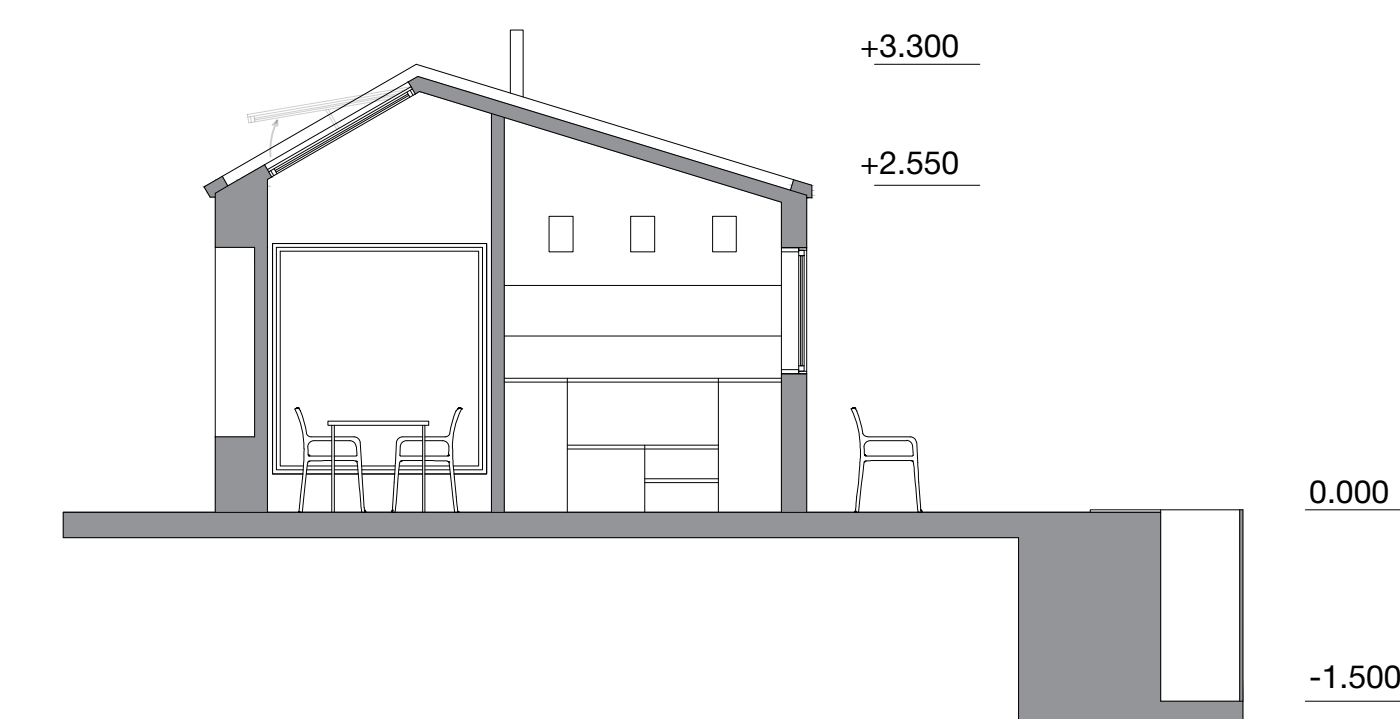
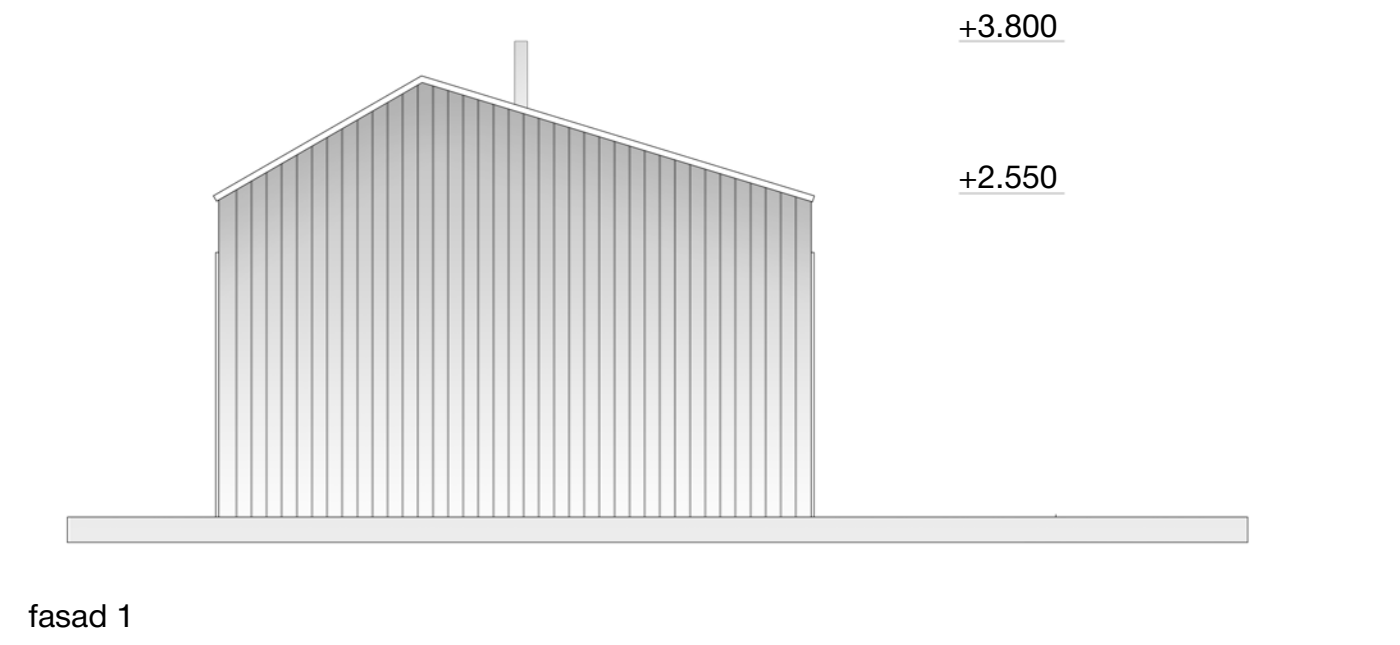
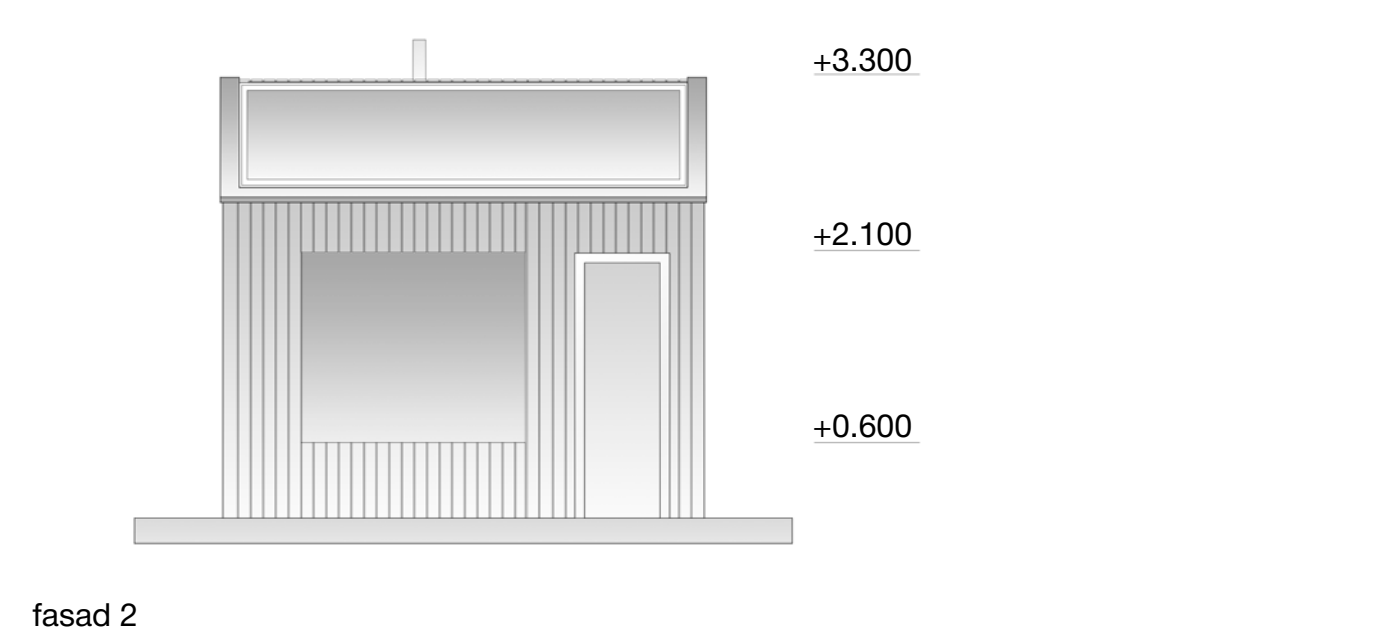
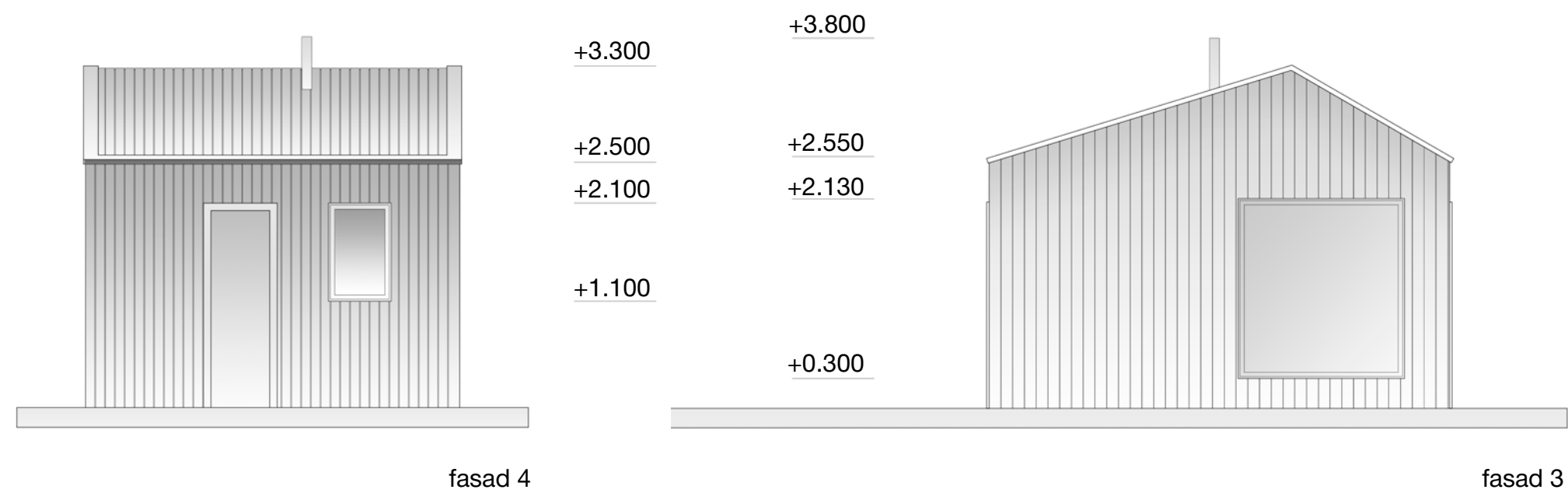
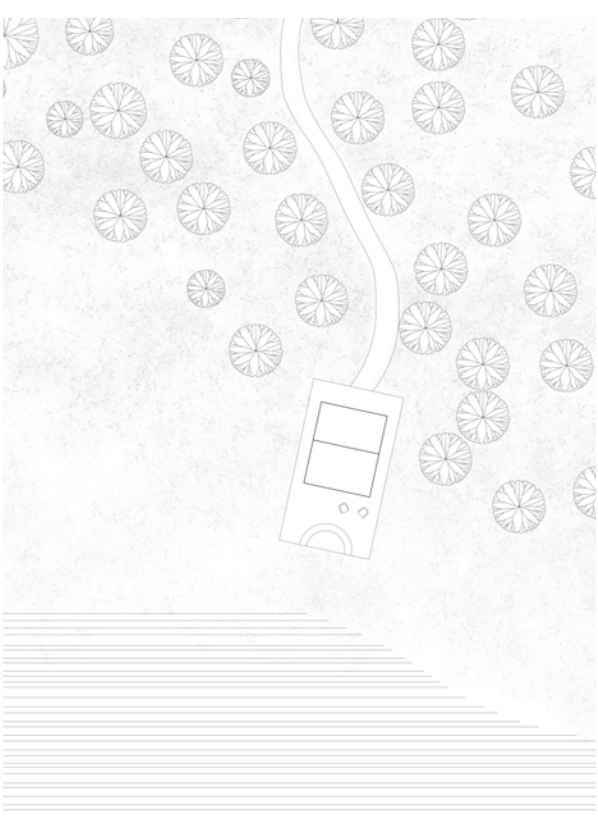


The house includes five areas: relaxing zone, kitchen, bathroom and bedrooms on the first and the second floors. The construction is made of sustainable wood. Large windows provide intense illumination and makes you feel like you're sitting outside. Blank walls focus attention on the changeability of nature, which allows you to relax from the city bustle.

The module on the roof has a relaxing zone that has a large window on the roof where you can climb up with the ladder. In this place you can observe star sky before bedtime. Also, it allows you to invite two more people to stay in the house.

All furniture is located on the central axis of the house and is not adjacent to curved walls, so the variety of furniture to place is high. Workplaces can be arranged at the bar table or at the panoramic window. At the entrance there is a built-in wardrobe where you can store outdoor and casual clothing. The bedroom has a reduced number of floors (distance is 1.8 m), this space is enough for sleeping. House can work completely off-grid through solar panels and rainwater collector. The big terrace let you enjoy the nature.





Assumed that we cannot copy sauna module.
The area of module can be optionally increased.

The sauna is a single module. The construction is made of sustainable wood. On the side of entrance there is a niche to store firewood. The sauna has a vestibule with a wardrobe, seating area for four people, bathroom, shower, steam room and terrace. In the recreation area there is a large panoramic window that provides unity with nature, and a lantern on the roof. The window serves to ventilate the room and to observe the stars. In the steam room, there are zones for recreation of different heights. The steam room is combined with a shower and has access to a terrace with a font. You can enjoy lake views from the terrace.